

**Summary Billing Statement  
AUGUST 2017**

Summary Account Number 13 011 504 01

Invoice number: 503100033325

13 011 504 01

TWP OF MONTCLAIR  
MONTCLAIR TWP OF  
50 S FULLERTON AVE  
MONTCLAIR NJ 07042-2629

**1 855-BIZ-PSEG (249-7734)**  
**Emergencies 24 hours/7days**  
Business customer service  
7 AM - 8 PM Mon - Fri  
7 AM - 5 PM Sat

Visit our website  
[www.pseg.com](http://www.pseg.com)

Inquiries by mail  
PSE&G  
PO Box 14444  
New Brunswick NJ 08906-4444

**Important Dates**  
Your payment is due  
December 26, 2017

**Account Summary for 19 Accounts**

PSE&G balance from last bill	\$14,659.41
Current PSE&G - Gas	2,334.61
Current PSE&G - Electric	10,985.19
Current PSE&G - Unmetered Charges	1,213.22
Other PSE&G Charges and Credits	-14,659.41
DIRECT ENERGY BUSINESS, LLC Electric Charges	10,874.27
TriEagle Energy, LP Electric Charges	324.16
<b>Total Amount Due On Dec 26, 2017</b>	<b>\$25,731.45</b>

SUMMARY

1301150401 0025731459 00257314595



**To help us make things work for you. Please return this portion with your payment. Make checks payable to PSE&G. Do not write on, staple, paper clip or tape payment to the coupon. Be sure payment address shows through window.**

TWP OF MONTCLAIR  
MONTCLAIR TWP OF  
50 S FULLERTON AVE  
MONTCLAIR NJ 07042-2629

13 011 504 01

**Total Amount Due On Dec 26, 2017** **\$25,731.45**

PSE&G CO  
PO BOX 14444  
NEW BRUNSWICK NJ 08906-4444



\$

**Amount enclosed**

### Electronic Check Conversion

When you pay by check, you authorize PSE&G to use your check to make a one-time electronic fund transfer from your account. If you do not wish to participate, call 1-800-436-PSEG.

### Electric & Gas Rate Information

For news about PSE&G's rate filing and upcoming public hearings visit [www.pseg.com/pseandgfilings](http://www.pseg.com/pseandgfilings)

### Customer Service Centers

Open Monday through Friday, during the hours noted.

Bayonne, 608 Broadway	8am to 4:00pm
Burlington, 501 High Street	8am to 4:00pm
Camden, 1 Port Center	8am to 4:00pm
Elizabeth, 550 N. Broad Street	8am to 4:00pm
Hackensack, 214 Hudson Street	8am to 4:00pm
Hoboken, 615 Washington Street	8am to 4:00pm
Jersey City, 35 Journal Square (Corner of Bergen Ave. & Newkirk St.)	8am to 4:00pm
Newark, 80 Park Plaza	8am to 4:00pm
New Brunswick, 317 George St.	8am to 4:00pm
West Orange, 59 Main St.	8am to 4:00pm
Passaic, 651 Main Ave	8am to 4:00pm
Paterson, 301 Main St (30 Clark St)	8am to 4:00pm
Perth Amboy, 286 State St.	8am to 4:00pm
Plainfield, 120 West Seventh Street	8am to 4:00pm
Trenton, 28 West State Street	8am to 4:00pm
Union City, 4808 Bergenline Avenue	8am to 4:00pm

### Bill Form Definitions

**Service Charge:** A fixed monthly charge related to metering, billing and account maintenance.

**Distribution Charges (Gas):** Charges related to delivering gas through pipes from supply sources to the customer. These charges include a therm component, and in November through March on certain rate schedules, also include a demand component.

### Bill Form Definitions (continued)

**Balancing Charge (Gas):** This charge reflects storage related costs associated with winter gas use. This charge is only applicable in the billing months of November through March.

**Demand (Gas):** The highest average daily use of gas over the most recent billing months of November to March.

**Supply (Gas):** Charges for customers who do not choose a competitive gas supplier are called Basic Gas Supply Service (BGSS). The charges include the cost of the natural gas as well as the cost of interstate delivery of the gas to New Jersey.

**Distribution Charges (Electric):** Charges related to delivering electricity through wires from supply sources to the customer. These charges include both kilowatthour (kWh) and demand (kW) components.

**Measured Demand (Electric):** The maximum use of electricity at any time during a month or monthly time period (on or off-peak).

#### Annual Demand (Electric):

(For Rate HTS): The highest Measured Demand over the most recent 12 months.

(For Rates MD, ED, LPLS, LPLP): The highest Measured Demand in any time period in the current month.

**Summer Demand (Electric):** The Measured Demand (excluding off-peak) in each billing month of June through September.

**Societal Benefits:** This charge recovers the cost of government mandated programs designed to achieve public policy goals, such as energy conservation.

**Securitization Transition:** This charge recovers costs and associated taxes for transition bonds and for BGS transition bonds collected by PSE&G as servicer on behalf of PSE&G Transition Funding LLC and PSE&G Transition Funding II LLC, respectively.

**Supply Capacity (Electric):** A customer's share of the generation and transmission facilities, measured in kilowatts (kW), which must be procured to serve the system annual peak usage. The customer's share is calculated from the customer's peak usage in the prior year's summer. For new customers without prior summer usage the share is calculated from connected load.

**Supply (Electric):** Charges for customers who do not choose a competitive electric supplier are called Basic Generation Service (BGS). The charges include the energy as well as the generation and transmission facilities necessary to produce and transmit the energy.

TDD number for the hearing impaired 1 800 225-0072

**Location Summary**

Name	Service at	Account number	Current charges	Account Balance
B O E MONTCLAIR	25 MAPLE AVE GLENFIELD MONTCLAIR TWP NJ	42 455 184 05	0.00	0.00
TWP OF MONTCLAIR	141 PARK ST HIGH SCH MONTCLAIR TWP NJ	42 456 005 00	3,013.67 ✓	5,665.68
MONTCLAIR BD OF ED	CHAMPLAIN TER O/B-FIELD MONTCLAIR TWP NJ	73 378 370 03	1.76 ✓	6.40
B O E MONTCLAIR	32 CEDAR AVE NISHUANE MONTCLAIR TWP NJ	73 378 371 00	585.69 ✓	1,185.18
B O E MONTCLAIR	20 EDGEMONT RD EDGEMNT MONTCLAIR TWP NJ	73 378 372 08	708.86 ✓	1,553.93
B O E MONTCLAIR	22 VALLEY RD BD OF ED MONTCLAIR TWP NJ	73 378 373 05	882.31	3,171.98
B O E MONTCLAIR	299 N FULLERTON AVE WATCHUNG MONTCLAIR TWP NJ	73 378 374 02	1,292.04	2,598.18
MONTCLAIR TWP OF	173 BELLEVUE AVE GAS ACCT MONTCLAIR TWP NJ	73 378 375 18	0.00	30.80
MONTCLAIR TWP OF	28 ESSEX AVE MONTCLAIR TWP NJ	73 378 376 07	1,365.78	2,605.09
B O E MONTCLAIR	603 GROVE ST N W ELEM MONTCLAIR TWP NJ	73 378 377 04	603.29	2,470.22
MONTCLAIR TWP OF	MIDLAND AVE MONTCLAIR TWP NJ	73 378 378 01	0.00	4.09
MONTCLAIR TWP OF	CHURCH ST & NW COR MONTCLAIR TWP NJ	73 378 379 09	2.43	12.59
TWP OF MONTCLAIR	141 PARK ST GAS ACCT MONTCLAIR TWP NJ	73 378 380 18	0.00	134.60
MONTCLAIR TWP OF	41 CHESTNUT ST ARENA MONTCLAIR TWP NJ	73 378 381 07	6.54	37.89
MONTCLAIR TWP OF	54 ORANGE RD MONTCLAIR TWP NJ	73 378 382 04	1,616.31	2,895.66
TWP OF MONTCLAIR	32 CEDAR AVE MONTCLAIR TWP NJ	73 378 383 01	-83.15	109.36
B O E MONTCLAIR	176 N FULLERTON AVE RENA MID MONTCLAIR TWP NJ	73 378 384 09	752.35 ✓	1,722.58
B O E MONTCLAIR	VARIOUS LOCATIONS LTG MONTCLAIR TWP NJ	73 378 385 06	318.61	1,497.51
MONTCLAIR TWP OF	176 N FULLERTON AVE MONTCLAIR TWP NJ	73 378 386 03	5.55	29.71
<b>Total Amount For 19 Accounts</b>			<b>\$11,072.04</b>	<b>\$25,731.45</b>

25 MAPLE AVE GLENFIELD  
 MONTCLAIR TWP NJ

Account number for this location 42 455 184 05

**Account Summary for this location**

Your next meter reading is  
 scheduled for January 17

Meter reading scheduling  
 1 800 436-PSEG(7734)

Current Charges	0.00
<b>Total Amount Due</b>	<b>\$0.00</b>

141 PARK ST HIGH SCH  
 MONTCLAIR TWP NJ

Account number for this location 42 456 005 00

Your next meter reading is  
 scheduled for January 16  
 Meter reading scheduling  
 1 800 436-PSEG(7734)

**Account Summary for this location**

PSE&G balance from last bill	\$2,652.01
Current Charges	3,013.67
<b>Total Amount Due</b>	<b>\$5,665.68</b>

**PSE&G Electric**

Account number for this location 42 456 005 00

Usage	Meter <b>9213519</b>
<b>Reading Aug 14</b>	
On-Peak actual	6284
Off-Peak1	
Off-Peak2	
<b>Reading Jul 15</b>	
On-Peak actual	6104
Off-Peak1	
Off-Peak2	
Multiplier	200
Total On kWh	18,421
Total Off kWh	17,546
<b>Total kWh</b>	<b>35,967</b>
<b>Distribution Demands</b>	
Annual Demand kW	148.30
Summer Demand kW	148.30
<b>Measured Demands</b>	
On-Peak kW	148.30
Off-Peak2 kW	113.00
Constant	200
<b>Supply Capacity</b>	
Generation kW	92.12
Transmission kW	65.96

Charges	PoD ID: PE000008948130338751	Rate - LPLS
<b>Delivery</b>		
Service charge		\$384.07
<b>Distribution charges</b>		
Annual Demand	148.30 kW @ \$3.892582603	577.27
Summer Demand	148.30 kW @ \$9.260552933	1,373.34
kWh - On-peak	18421 kWh @ \$0.000953803	17.57
kWh - Off-peak	17546 kWh @ \$0.000954064	16.74
Societal Benefits	35967 kWh @ \$0.007868880	283.02
<b>Sub-Total Delivery</b>		<b>\$2,652.01</b>

**Total electric charges \$2,652.01**

*\*You are currently purchasing your electric supply from another supplier. If you had been purchasing your electric supply from PSE&G, you would have been billed \$3,261.99 for this supply. This is your Price to Compare, which varies each month depending upon your usage pattern.*

**Other Charges And Credits**

Account number for this location 42 456 005 00

Elec Billing From Aug 14, 2017	Oct 11, 2017	\$-2,652.01
Cancelled		
<b>Total other charges and credits</b>		<b>\$2,652.01 CR</b>

**DIRECT ENERGY BUSINESS, LLC**

Account number for this location 42 456 005 00

*Through the CHOICE Program, you have chosen to purchase electricity from DIRECT ENERGY BUSINESS, LLC. If you have any questions, please contact them directly at 888-925-9115.*

Adjustments	0.00
Current charges	3,013.67
<b>Total DIRECT ENERGY BUSINESS, LLC Charges</b>	<b>\$3,013.67</b>

Fixed Price - 35,966.97 Kwh Total @ \$0.08379/Kwh

**CHAMPLAIN TER O/B-FIELD  
 MONTCLAIR TWP NJ**

Account number for this location 73 378 370 03

Your next meter reading is  
 scheduled for January 10

Meter reading scheduling  
 1 800 436-PSEG(7734)

**Account Summary for this location**

Current Charges	1.76 ✓
<b>Total Amount Due</b>	<b>\$1.76</b>

**PSE&G Electric**

Account number for this location 73 378 370 03

Usage	Meter <b>626051179</b>	Charges	PoD ID: PE000008184629762503	Rate - GLP
Estimated reading Aug 10	1020	<b>Delivery</b>		
Actual reading Jul 12	999	Service charge		\$4.23
Total kWh	21	Distribution charges		
		kWh charges	21 kWh @ \$0.011428571	0.24
Supply Capacity		Societal Benefits	21 kWh @ \$0.008095238	0.17
Generation kW	0.06	<b>Sub-Total Delivery</b>		<b>\$4.64</b>
Transmission kW	0.05	<b>Total electric charges</b>		<b>\$4.64</b>

*\*You are currently purchasing your electric supply from another supplier. If you had been purchasing your electric supply from PSE&G, you would have been billed \$2.10 for this supply. This is your Price to Compare, which varies each month depending upon your usage pattern.*

**Other Charges And Credits**

Account number for this location 73 378 370 03

Elec Billing From Aug 10, 2017	Oct 11, 2017	\$-4.64
Cancelled		
<b>Total other charges and credits</b>		<b>\$4.64 CR</b>

**DIRECT ENERGY BUSINESS, LLC**

Account number for this location 73 378 370 03

*Through the CHOICE Program, you have chosen to purchase electricity from DIRECT ENERGY BUSINESS, LLC. If you have any questions, please contact them directly at 888-925-9115.*

Adjustments	0.00
Current charges	1.76
<b>Total DIRECT ENERGY BUSINESS, LLC Charges</b>	<b>\$1.76</b>

Fixed Price - 21 Kwh Total @ \$0.08379/Kwh

**32 CEDAR AVE NISHUANE  
 MONTCLAIR TWP NJ**

Account number for this location 73 378 371 00

Your next meter reading is  
 scheduled for January 17  
  
 Meter reading scheduling  
 1 800 436-PSEG(7734)

**Account Summary for this location**

PSE&G balance from last bill	\$599.49
Current Charges	585.69 ✓
<b>Total Amount Due</b>	<b>\$1,185.18</b>

**PSE&G Electric**

Account number for this location 73 378 371 00

Usage	Meter <b>59581092</b>
Estimated reading Aug 15	6874
Actual reading Jul 18	6641
Difference	233
Meter multiplier	30
<b>Total kWh</b>	<b>6990</b>
<b>Distribution Demands</b>	
Annual Demand kW	36.90
Summer Demand kW	36.90
<b>Measured Demands</b>	
Demand kW	36.90
Constant	30
<b>Supply Capacity</b>	
Generation kW	77.72
Transmission kW	67.96

<b>Charges</b>	PoD ID: PE000009434847145191	Rate - GLP
<b>Delivery</b>		
Service charge		\$4.09
<b>Distribution charges</b>		
Annual Demand	36.90 kW @ \$4.361788618	160.95
Summer Demand	36.90 kW @ \$8.094850949	298.70
kWh charges	6990 kWh @ \$0.011552217	80.75
Societal Benefits	6990 kWh @ \$0.007868383	55.00
<b>Sub-Total Delivery</b>		<b>\$599.49</b>
<b>Total electric charges</b>		<b>\$599.49</b>

*\*You are currently purchasing your electric supply from another supplier. If you had been purchasing your electric supply from PSE&G, you would have been billed \$1,439.43 for this supply. This is your Price to Compare, which varies each month depending upon your usage pattern.*

**Other Charges And Credits**

Account number for this location 73 378 371 00

Elec Billing From Aug 15, 2017	Oct 11, 2017	\$-599.49
Cancelled		
<b>Total other charges and credits</b>		<b>\$599.49 CR</b>

**DIRECT ENERGY BUSINESS, LLC**

Account number for this location 73 378 371 00

*Through the CHOICE Program, you have chosen to purchase electricity from DIRECT ENERGY BUSINESS, LLC. If you have any questions, please contact them directly at 888-925-9115.*

Adjustments	0.00
Current charges	585.69
<b>Total DIRECT ENERGY BUSINESS, LLC Charges</b>	<b>\$585.69</b>

Fixed Price - 6,990 Kwh Total @ \$0.08379/Kwh

**20 EDMONT RD EDMONT  
 MONTCLAIR TWP NJ**

Account number for this location 73 378 372 08

Your next meter reading is  
 scheduled for January 17

Meter reading scheduling  
 1 800 436-PSEG(7734)

**Account Summary for this location**

PSE&G balance from last bill	\$845.07
Current Charges	708.86 ✓
<b>Total Amount Due</b>	<b>\$1,553.93</b>

**PSE&G Gas**

Account number for this location 73 378 372 08

Usage	Meter <b>2209380</b>
Actual reading Aug 15	58058
Estimated reading Jul 18	57891
Difference	167
Conversion to CCF	x 1.0120
CCF total	169.004
Conversion to therms	x 1.03200
Total therms	174.412

<b>Charges</b>	PoD ID: PG000011140101445191	Rate - LVG
<b>Delivery</b>		
Service charge		\$103.43
Distribution charge	174.412 therms @ \$0.0471871	8.23
Societal Benefits	174.412 therms @ \$0.04707240	8.21
<b>Total Delivery</b>		<b>\$119.87</b>
<b>Total gas charges</b>		<b>\$119.87</b>

*A history of PSE&G's monthly Basic Gas Supply Service (BGSS) prices are located on our website at www.pseg.com.*

Gas Deliveries	
Bill period deliveries	86.043
Imbalance*	88.369 +

*\* The imbalance of 88.369+ will be applied to your Gas Deliveries in the month of October. The amount and month applied may differ if you are switching third party suppliers or your account requires an adjustment.*

\*See text

**PSE&G Electric**

Account number for this location 73 378 372 08

Usage	Meter <b>1205063</b>
Actual reading Aug 15	7920
Actual reading Jul 18	7638
Difference	282
Meter multiplier	30
Total kWh	8460

<b>Charges</b>	PoD ID: PE000011140102245191	Rate - GLP
<b>Delivery</b>		
Service charge		\$4.09
Distribution charges		
Annual Demand	44.70 kW @ \$4.361744966	194.97
Summer Demand	44.70 kW @ \$8.094854586	361.84
kWh charges	8460 kWh @ \$0.011552009	97.73

**PSE&G Electric (continued)**

Account number for this location 73 378 372 08

Distribution Demands		Societal Benefits	8460 kWh @ \$0.007868794	66.57
Annual Demand kW	44.70	<b>Sub-Total Delivery</b>		<b>\$725.20</b>
Summer Demand kW	44.70	<b>Total electric charges</b>		<b>\$725.20</b>
Measured Demands		<i>*You are currently purchasing your electric supply from another supplier. If you had been purchasing your electric supply from PSE&amp;G, you would have been billed \$1,004.21 for this supply. This is your Price to Compare, which varies each month depending upon your usage pattern.</i>		
Demand kW	44.70			
Constant	30			
Supply Capacity				
Generation kW	38.22			
Transmission kW	33.42			

**Other Charges And Credits**

Account number for this location 73 378 372 08

Elec Billing From Aug 15, 2017	Oct 11, 2017	\$-725.20
Cancelled		
Gas Billing From Aug 15, 2017	Oct 11, 2017	-119.87
Cancelled		
<b>Total other charges and credits</b>		<b>\$845.07 CR</b>

**DIRECT ENERGY BUSINESS, LLC**

Account number for this location 73 378 372 08

*Through the CHOICE Program, you have chosen to purchase electricity from DIRECT ENERGY BUSINESS, LLC. If you have any questions, please contact them directly at 888-925-9115.*

Adjustments	0.00
Current charges	708.86
<b>Total DIRECT ENERGY BUSINESS, LLC Charges</b>	<b>\$708.86</b>

Fixed Price - 8,460 Kwh Total @ \$0.08379/Kwh

22 VALLEY RD BD OF ED  
 MONTCLAIR TWP NJ

Account number for this location 73 378 373 05

Your next meter reading is  
 scheduled for January 12  
 Meter reading scheduling  
 1 800 436-PSEG(7734)

**Account Summary for this location**

PSE&G balance from last bill	\$2,289.67
Current Charges	882.31 ✓
<b>Total Amount Due</b>	<b>\$3,171.98</b>



**PSE&G Gas**

Account number for this location 73 378 373 05

Usage	Meter <b>4223501</b>
Actual reading Aug 11	222
Actual reading Jul 14	192
Difference	30
Conversion to CCF	x 1.0120
CCF total	30.360
Conversion to therms	x 1.03200
Total therms	31.332

Gas Deliveries	
Bill period deliveries	40.226
Imbalance*	8.894 -

\*See text

Charges		PoD ID: PG000009908906245191	Rate - GSG
<b>Delivery</b>			
Service charge			\$11.98
Distribution charge	31.332 therms @ \$0.2690540		8.43
Societal Benefits	31.332 therms @ \$0.04691690		1.47
<b>Total Delivery</b>			<b>\$21.88</b>
<b>Total gas charges</b>			<b>\$21.88</b>

A history of PSE&G's monthly Basic Gas Supply Service (BGSS) prices are located on our website at www.pseg.com.

\* The Imbalance of 8.894- will be applied to your Gas Deliveries in the month of October. The amount and month applied may differ if you are switching third party suppliers or your account requires an adjustment.

Usage	Meter <b>3637119</b>
Estimated reading Aug 14	362258
Actual reading Jul 14	360207
Difference	2051
Conversion to CCF	x 1.0120
CCF total	2075.612
Conversion to therms	x 1.03200
Total therms	2142.032

Supply*	
BGSS Commodity	2142.032 therms @ \$0.53874078
<b>Total Supply</b>	<b>\$1,154.00</b>

Charges		PoD ID: PG000011965185945191	Rate - LVG
<b>Delivery</b>			
Service charge			\$114.13
Distribution charge			
First	1067.000 therms @ \$0.0471884		50.35
Next	1075.032 therms @ \$0.0425383		45.73
Societal Benefits	2142.032 therms @ \$0.04704410		100.77
<b>Total Delivery</b>			<b>\$310.98</b>
<b>Supply*</b>			
BGSS Commodity	2142.032 therms @ \$0.53874078		1,154.00
<b>Total Supply</b>			<b>\$1,154.00</b>
<b>Total gas charges</b>			<b>\$1,464.98</b>

A history of PSE&G's monthly Basic Gas Supply Service (BGSS) prices are located on our website at www.pseg.com.

**PSE&G Electric**

Account number for this location 73 378 373 05

Usage	Meter <b>678000415</b>
Estimated reading Aug 14	93857
Actual reading Jul 14	93506
Difference	351
Meter multiplier	30
Total kWh	10530
Distribution Demands	
Annual Demand kW	43.20
Summer Demand kW	43.20
Measured Demands	
Demand kW	43.20

Charges		PoD ID: PE000009908907045191	Rate - GLP
<b>Delivery</b>			
Service charge			\$4.51
Distribution charges			
Annual Demand	43.20 kW @ \$4.812962963		207.92
Summer Demand	43.20 kW @ \$8.932407407		385.88
kWh charges	10530 kWh @ \$0.011551757		121.64
Societal Benefits	10530 kWh @ \$0.007868946		82.86
<b>Sub-Total Delivery</b>			<b>\$802.81</b>
<b>Total electric charges</b>			<b>\$802.81</b>

**PSE&G Electric (continued)**

Account number for this location 73 378 373 05

Constant	30
Supply Capacity	
Generation kW	43.42
Transmission kW	37.96

*\*You are currently purchasing your electric supply from another supplier. If you had been purchasing your electric supply from PSE&G, you would have been billed \$1,260.47 for this supply. This is your Price to Compare, which varies each month depending upon your usage pattern.*

**Other Charges And Credits**

Account number for this location 73 378 373 05

Elec Billing From Aug 14, 2017 Cancelled	Oct 11, 2017	\$-802.81
Gas Billing From Aug 14, 2017 Cancelled	Oct 11, 2017	-1,486.86
<b>Total other charges and credits</b>		<b>\$2,289.67 CR</b>

**DIRECT ENERGY BUSINESS, LLC**

Account number for this location 73 378 373 05

*Through the CHOICE Program, you have chosen to purchase electricity from DIRECT ENERGY BUSINESS, LLC. If you have any questions, please contact them directly at 888-925-9115.*

Adjustments	0.00
Current charges	882.31
<b>Total DIRECT ENERGY BUSINESS, LLC Charges</b>	<b>\$882.31</b>

Fixed Price - 10,530 Kwh Total @ \$0.08379/Kwh

299 N FULLERTON AVE  
 WATCHUNG  
 MONTCLAIR TWP NJ

Account number for this location 73 378 374 02

Your next meter reading is  
 scheduled for January 17

Meter reading scheduling  
 1 800 436-PSEG(7734)

**Account Summary for this location**

PSE&G balance from last bill	\$1,306.14
Current Charges	1,292.04 ✓
<b>Total Amount Due</b>	<b>\$2,598.18</b>

**PSE&G Gas**

Account number for this location 73 378 374 02

Usage	Meter <b>3010325</b>	<b>Charges</b>	PoD ID: PG000008219967045191	Rate - LVG
Actual reading Aug 15	32095	<b>Delivery</b>		
Actual reading Jul 18	32072	Service charge		\$103.43
Difference	23	Distribution charge	24.021 therms @ \$0.0470422	1.13
Conversion to CCF	x 1.0120	Societal Benefits	24.021 therms @ \$0.04704220	1.13
CCF total	23.276	<b>Total Delivery</b>		<b>\$105.69</b>
Conversion to therms	x 1.03200	<b>Total gas charges</b>		<b>\$105.69</b>
Total therms	24.021	<i>A history of PSE&amp;G's monthly Basic Gas Supply Service (BGSS) prices are located on our website at www.pseg.com.</i>		
Gas Deliveries		<i>* The Imbalance of 9.686- will be applied to your Gas Deliveries in the month of October. The amount and month applied may differ if you are switching third party suppliers or your account requires an adjustment.</i>		
Bill period deliveries	33.707			
Imbalance*	9.686 -			

\*See text

**PSE&G Electric**

Account number for this location 73 378 374 02

Usage	Meter <b>52895559</b>	<b>Charges</b>	PoD ID: PE000008219968845191	Rate - GLP
Actual reading Aug 15	7491	<b>Delivery</b>		
Actual reading Jul 18	6977	Service charge		\$4.09
Difference	514	Distribution charges		
Meter multiplier	30	Annual Demand	72.00 kW @ \$4.361805556	314.05
Total kWh	15420	Summer Demand	72.00 kW @ \$8.095000000	582.84
Distribution Demands		kWh charges	15420 kWh @ \$0.011551881	178.13
Annual Demand kW	72.00	Societal Benefits	15420 kWh @ \$0.007869001	121.34
Summer Demand kW	72.00	<b>Sub-Total Delivery</b>		<b>\$1,200.45</b>
Measured Demands		<b>Total electric charges</b>		<b>\$1,200.45</b>
Demand kW	72.00	<i>*You are currently purchasing your electric supply from another supplier. If you had been purchasing your electric supply from PSE&amp;G, you would have been billed \$1,868.21 for this supply. This is your Price to Compare, which varies each month depending upon your usage pattern.</i>		
Constant	30			
Supply Capacity				
Generation kW	72.52			
Transmission kW	63.42			

**Other Charges And Credits**

Account number for this location 73 378 374 02

Elec Billing From Aug 15, 2017	Oct 11, 2017	\$-1,200.45
Cancelled		
Gas Billing From Aug 15, 2017	Oct 11, 2017	-105.69
Cancelled		
<b>Total other charges and credits</b>		<b>\$1,306.14 CR</b>

**DIRECT ENERGY BUSINESS, LLC**

Account number for this location 73 378 374 02

*Through the CHOICE Program, you have chosen to purchase electricity from DIRECT ENERGY BUSINESS, LLC. If you have any questions, please contact them directly at 888-925-9115.*

Adjustments	0.00
Current charges	1,292.04 ✓
<b>Total DIRECT ENERGY BUSINESS, LLC Charges</b>	<b>\$1,292.04</b>

Fixed Price - 15,420 Kwh Total @ \$0.08379/Kwh

**173 BELLEVUE AVE GAS ACCT  
 MONTCLAIR TWP NJ**

Account number for this location 73 378 375 18

Your next meter reading is  
 scheduled for January 17

Meter reading scheduling  
 1 800 436-PSEG(7734)

**Account Summary for this location**

PSE&G balance from last bill	\$30.80 CR
Current Charges	0.00 ✓
<b>Credit balance</b>	<b>\$30.80 CR</b>

**PSE&G Gas**

Account number for this location 73 378 375 18

Usage	Meter <b>2414297</b>	Charges	PoD ID: PG000008219969680717	Rate - GSG (HTG)
Actual reading Aug 15	71027	<b>Delivery</b>		
Actual reading Jul 18	70970	Service charge		\$11.98
Difference	57	Distribution charge	59.530 therms @ \$0.2691080	16.02
Conversion to CCF	x 1.0120	Societal Benefits	59.530 therms @ \$0.04703510	2.80
CCF total	57.684	<b>Total Delivery</b>		<b>\$30.80</b>
Conversion to therms	x 1.03200	<b>Total gas charges</b>		<b>\$30.80</b>
Total therms	59.530			

*A history of PSE&G's monthly Basic Gas Supply Service (BGSS) prices are located on our website at www.pseg.com.*

*\* The Imbalance of 173.520- will be applied to your Gas Deliveries in the month of October. The amount and month applied may differ if you are switching third party suppliers or your account requires an adjustment.*

Gas Deliveries	
Bill period deliveries	233.050
Imbalance*	173.520 -

\*See text

**Other Charges And Credits**

Account number for this location 73 378 375 18

Gas Billing From Aug 15, 2017	Oct 11, 2017	\$-30.80
Cancelled		
<b>Total other charges and credits</b>		<b>\$30.80 CR</b>

28 ESSEX AVE  
 MONTCLAIR TWP NJ

Account number for this location 73 378 376 07

Your next meter reading is  
 scheduled for January 17  
 Meter reading scheduling  
 1 800 436-PSEG(7734)

**Account Summary for this location**

PSE&G balance from last bill	\$1,239.31
Current Charges	1,365.78
<b>Total Amount Due</b>	<b>\$2,605.09</b>

**PSE&G Gas**

Account number for this location 73 378 376 07

Usage	Meter <b>3165741</b>
Actual reading Aug 15	27471
Actual reading Jul 18	27431
Difference	40
Conversion to CCF	x 1.0120
CCF total	40.480
Conversion to therms	x 1.03200
Total therms	41.775

Charges	PoD ID: PG000007977730678939	Rate - LVG
<b>Delivery</b>		
Service charge		\$103.43
Distribution charge	41.775 therms @ \$0.0471574	1.97
Societal Benefits	41.775 therms @ \$0.04715740	1.97
<b>Total Delivery</b>		<b>\$107.37</b>
<b>Total gas charges</b>		<b>\$107.37</b>

Gas Deliveries	
Bill period deliveries	58.667
Imbalance*	16.892 -

A history of PSE&G's monthly Basic Gas Supply Service (BGSS) prices are located on our website at [www.pseg.com](http://www.pseg.com).

\* The Imbalance of 16.892- will be applied to your Gas Deliveries in the month of October. The amount and month applied may differ if you are switching third party suppliers or your account requires an adjustment.

\*See text

**PSE&G Electric**

Account number for this location 73 378 376 07

Usage	Meter <b>9195583</b>
Estimated reading Aug 15	11873
Actual reading Jul 18	11744
Difference	129
Meter multiplier	120
Total kWh	15480
<b>Distribution Demands</b>	
Annual Demand kW	56.40
Summer Demand kW	56.40
<b>Measured Demands</b>	
Demand kW	56.40
Constant	120
<b>Supply Capacity</b>	
Generation kW	50.93
Transmission kW	44.54

Charges	PoD ID: PE000007977731478939	Rate - GLP
<b>Delivery</b>		
Service charge		\$4.09
<b>Distribution charges</b>		
Annual Demand	56.40 kW @ \$4.361879433	246.01
Summer Demand	56.40 kW @ \$8.095035461	456.56
kWh charges	15480 kWh @ \$0.011551680	178.82
Societal Benefits	15480 kWh @ \$0.007868863	121.81
<b>Sub-Total Delivery</b>		<b>\$1,007.29</b>
<b>Total electric charges</b>		<b>\$1,007.29</b>

\*You are currently purchasing your electric supply from another supplier. If you had been purchasing your electric supply from PSE&G, you would have been billed \$1,586.21 for this supply. This is your Price to Compare, which varies each month depending upon your usage pattern.

**PSE&G Electric**

Account number for this location 73 378 376 07

Usage	Meter <b>638000167</b>	Charges	PoD ID: PE000007977732278939	Rate - GLP
Actual reading Aug 15	32735	<b>Delivery</b>		
Actual reading Jul 18	32694	Service charge		\$4.09
Difference	41	Distribution charges		
Meter multiplier	20	Annual Demand	8.40 kW @ \$4.361904762	36.64
Total kWh	820	Summer Demand	8.40 kW @ \$8.095238095	68.00
Distribution Demands		kWh charges	820 kWh @ \$0.011548780	9.47
Annual Demand kW	8.40	Societal Benefits	820 kWh @ \$0.007865854	6.45
Summer Demand kW	8.40	<b>Sub-Total Delivery</b>		<b>\$124.65</b>
Measured Demands		<b>Total electric charges</b>		
Demand kW	8.40	<i>*You are currently purchasing your electric supply from another supplier. If you had been purchasing your electric supply from PSE&amp;G, you would have been billed \$145.23 for this supply. This is your Price to Compare, which varies each month depending upon your usage pattern.</i>		
Constant	20	<b>\$124.65</b>		
Supply Capacity				
Generation kW	7.34			
Transmission kW	6.42			

**Other Charges And Credits**

Account number for this location 73 378 376 07

Elec Billing From Aug 15, 2017	Oct 11, 2017	\$-1,131.94
Cancelled		
Gas Billing From Aug 15, 2017	Oct 11, 2017	-107.37
Cancelled		
<b>Total other charges and credits</b>		<b>\$1,239.31 CR</b>

**DIRECT ENERGY BUSINESS, LLC**

Account number for this location 73 378 376 07

*Through the CHOICE Program, you have chosen to purchase electricity from DIRECT ENERGY BUSINESS, LLC. If you have any questions, please contact them directly at 888-925-9115.*

Adjustments	0.00
Current charges	1,365.78
<b>Total DIRECT ENERGY BUSINESS, LLC Charges</b>	<b>\$1,365.78</b>

Fixed Price - 820 Kwh Total @ \$0.08379/Kwh  
 Fixed Price - 15,480 Kwh Total @ \$0.08379/Kwh

603 GROVE ST N W ELEM  
 MONTCLAIR TWP NJ

Account number for this location 73 378 377 04

Your next meter reading is  
 scheduled for January 17

Meter reading scheduling  
 1 800 436-PSEG(7734)

**Account Summary for this location**

PSE&G balance from last bill	\$1,866.93
Current Charges	603.29
<b>Total Amount Due</b>	<b>\$2,470.22</b>

**PSE&G Gas**

Account number for this location 73 378 377 04

Usage	Meter <b>2209360</b>
Actual reading Aug 15	76113
Estimated reading Jul 18	75987
Difference	126
Conversion to CCF	x 1.0339
CCF total	130.271
Conversion to therms	x 1.03200
Total therms	134.440

Gas Deliveries	
Bill period deliveries	54.286
Imbalance*	80.154 +

\*See text

Charges	PoD ID: PG000008704508445191	Rate - LVG
<b>Delivery</b>		
Service charge		\$103.43
Distribution charge	134.440 therms @ \$0.0471586	6.34
Societal Benefits	134.440 therms @ \$0.04700980	6.32
<b>Total Delivery</b>		<b>\$116.09</b>
<b>Total gas charges</b>		<b>\$116.09</b>

A history of PSE&G's monthly Basic Gas Supply Service (BGSS) prices are located on our website at www.pseg.com.

\* The Imbalance of 80.154+ will be applied to your Gas Deliveries in the month of October. The amount and month applied may differ if you are switching third party suppliers or your account requires an adjustment.

**PSE&G Electric**

Account number for this location 73 378 377 04

Usage	Meter <b>678001516</b>
Actual reading Aug 15	35174
Actual reading Jul 18	35078
Difference	96
Meter multiplier	75
Total kWh	7200

Distribution Demands	
Annual Demand kW	129.00
Summer Demand kW	129.00

Measured Demands	
Demand kW	129.00
Constant	75

Supply Capacity	
Generation kW	105.02
Transmission kW	91.84

Charges	PoD ID: PE000008704509245191	Rate - GLP
<b>Delivery</b>		
Service charge		\$4.09
Distribution charges		
Annual Demand	129.00 kW @ \$4.361782946	562.67
Summer Demand	129.00 kW @ \$8.094961240	1,044.25
kWh charges	7200 kWh @ \$0.011551389	83.17
Societal Benefits	7200 kWh @ \$0.007869444	56.66
<b>Sub-Total Delivery</b>		<b>\$1,750.84</b>

**Total electric charges \$1,750.84**

\*You are currently purchasing your electric supply from another supplier. If you had been purchasing your electric supply from PSE&G, you would have been billed \$1,812.61 for this supply. This is your Price to Compare, which varies each month depending upon your usage pattern.

**Other Charges And Credits**

Account number for this location 73 378 377 04

Elec Billing From Aug 15, 2017 Cancelled	Oct 11, 2017	\$-1,750.84
Gas Billing From Aug 15, 2017 Cancelled	Oct 11, 2017	-116.09
<b>Total other charges and credits</b>		<b>\$1,866.93 CR</b>

**DIRECT ENERGY BUSINESS, LLC**

Account number for this location 73 378 377 04

*Through the CHOICE Program, you have chosen to purchase electricity from DIRECT ENERGY BUSINESS, LLC. If you have any questions, please contact them directly at 888-925-9115.*

Adjustments	0.00
Current charges	603.29
<b>Total DIRECT ENERGY BUSINESS, LLC Charges</b>	<b>\$603.29</b>

Fixed Price - 7,200 Kwh Total @ \$0.08379/Kwh

**MIDLAND AVE  
 MONTCLAIR TWP NJ**

Account number for this location 73 378 378 01

Your next meter reading is scheduled for January 17

Meter reading scheduling  
 1 800 436-PSEG(7734)

**Account Summary for this location**

PSE&G balance from last bill	\$4.09
Current Charges	0.00
<b>Total Amount Due</b>	<b>\$4.09</b>

**PSE&G Electric**

Account number for this location 73 378 378 01

Usage	Meter <b>134019815</b>
Actual reading Aug 15	34258
Actual reading Jul 18	34258
Total kWh	0

<b>Charges</b>	PoD ID: PE000011384048278916	Rate - GLP
<b>Delivery</b>		
Service charge		\$4.09
<b>Sub-Total Delivery</b>		<b>\$4.09</b>

<b>Supply Capacity</b>	
Generation kW	0.00
Transmission kW	0.00

**Total electric charges \$4.09**

*\*You are currently purchasing your electric supply from another supplier. If you had been purchasing your electric supply from PSE&G, you would have been billed \$0.02 for this supply. This is your Price to Compare, which varies each month depending upon your usage pattern.*

**Other Charges And Credits**

Account number for this location 73 378 378 01

Elec Billing From Aug 15, 2017 Cancelled	Oct 11, 2017	\$-4.09
<b>Total other charges and credits</b>		<b>\$4.09 CR</b>



**DIRECT ENERGY BUSINESS, LLC**

Account number for this location 73 378 378 01

*Through the CHOICE Program, you have chosen to purchase electricity from DIRECT ENERGY BUSINESS, LLC. If you have any questions, please contact them directly at 888-925-9115.*

Adjustments	0.00
Current charges	0.00
<b>Total DIRECT ENERGY BUSINESS, LLC Charges</b>	<b>\$0.00</b>

Fixed Price - 0 Kwh Total @ \$0.08379/Kwh

**CHURCH ST & NW COR  
 MONTCLAIR TWP NJ**

Account number for this location 73 378 379 09

Your next meter reading is  
 scheduled for January 03

Meter reading scheduling  
 1 800 436-PSEG(7734)

**Account Summary for this location**

PSE&G balance from last bill	\$10.16
Current Charges	2.43
<b>Total Amount Due</b>	<b>\$12.59</b>

**Unmetered Electric Service**

Account number for this location 73 378 379 09

PoD ID: PE000011818803678780

Service from 8/3/2017  
 to 8/31/2017

Usage	29.0
Distribution Demands	
Annual Demand kW	0.30
Summer Demand kW	0.30
Supply Capacity	
Generation kW	0.29
Transmission kW	0.25

<b>Charges</b>		Rate - GLP
<b>Delivery</b>		
Fixed services		\$1.89
Distribution charges		
Annual Demand	0.30 kW @ \$4.366666700	1.31
Summer Demand	0.30 kW @ \$8.100000000	2.43
kWh charges	29 kWh @ \$0.011552000	0.34
Societal Benefits	29 kWh @ \$0.007931000	0.23
Facilities charge		3.96
<b>Sub-Total Delivery</b>		<b>\$10.16</b>
<b>Unmetered charges</b>		<b>\$10.16</b>

*\*The total supply amount (\$5.42) is your Price to Compare for this month should you consider another electric supplier for these services. Your Price to Compare varies each month depending upon your usage pattern.*

**Other Charges And Credits**

Account number for this location 73 378 379 09

Elec Billing From Aug 31, 2017	Oct 11, 2017	\$-10.16
Cancelled		
<b>Total other charges and credits</b>		<b>\$10.16 CR</b>

**DIRECT ENERGY BUSINESS, LLC**

Account number for this location 73 378 379 09

*Through the CHOICE Program, you have chosen to purchase electricity from DIRECT ENERGY BUSINESS, LLC. If you have any questions, please contact them directly at 888-925-9115.*

Adjustments	0.00
Current charges	2.43
<b>Total DIRECT ENERGY BUSINESS, LLC Charges</b>	<b>\$2.43</b>

Fixed Price - 29 Kwh Total @ \$0.08379/Kwh

**141 PARK ST GAS ACCT  
 MONTCLAIR TWP NJ**

Account number for this location 73 378 380 18

Your next meter reading is scheduled for January 17

Meter reading scheduling  
 1 800 436-PSEG(7734)

**Account Summary for this location**

PSE&G balance from last bill	\$134.60 CR
Current Charges	0.00
<b>Credit balance</b>	<b>\$134.60 CR</b>

**PSE&G Gas**

Account number for this location 73 378 380 18

Usage	Meter <b>3637994</b>
Actual reading Aug 15	290060
Actual reading Jul 18	289750
Difference	310
Conversion to CCF	x 1.0339
CCF total	320.509
Conversion to therms	x 1.03200
<b>Total therms</b>	<b>330.765</b>

Gas Deliveries	
Bill period deliveries	438.606
Imbalance*	107.841 -

<b>Charges</b>	PoD ID: PG000010163338638751	Rate - LVG
<b>Delivery</b>		
Service charge		\$103.43
Distribution charge	330.765 therms @ \$0.0471936	15.61
Societal Benefits	330.765 therms @ \$0.04704250	15.56
<b>Total Delivery</b>		<b>\$134.60</b>
<b>Total gas charges</b>		<b>\$134.60</b>

*A history of PSE&G's monthly Basic Gas Supply Service (BGSS) prices are located on our website at www.pseg.com.*

*\* The Imbalance of 107.841- will be applied to your Gas Deliveries in the month of October. The amount and month applied may differ if you are switching third party suppliers or your account requires an adjustment.*

\*See text

**Other Charges And Credits**

Account number for this location 73 378 380 18

Gas Billing From Aug 15, 2017	Oct 11, 2017	\$-134.60
Cancelled		
<b>Total other charges and credits</b>		<b>\$134.60 CR</b>

41 CHESTNUT ST ARENA  
 MONTCLAIR TWP NJ

Account number for this location 73 378 381 07

Your next meter reading is  
 scheduled for January 17

Meter reading scheduling  
 1 800 436-PSEG(7734)

**Account Summary for this location**

PSE&G balance from last bill	\$31.35
Current Charges	6.54
<b>Total Amount Due</b>	<b>\$37.89</b>

**PSE&G Gas**

Account number for this location 73 378 381 07

Usage	Meter <b>2359827</b>
Actual reading Aug 15	926
Actual reading Jul 18	922
Difference	4
Conversion to CCF	x 1.0120
CCF total	4.048
Conversion to therms	x 1.03210
Total therms	4.178
Gas Deliveries	
Bill period deliveries	7.974
Imbalance*	3.796 -

Charges	PoD ID: PG000010164338577005	Rate - GSG (HTG)
<b>Delivery</b>		
Service charge		\$11.98
Distribution charge	4.178 therms @ \$0.2680708	1.12
Societal Benefits	4.178 therms @ \$0.04786980	0.20
<b>Total Delivery</b>		<b>\$13.30</b>
<b>Total gas charges</b>		<b>\$13.30</b>

A history of PSE&G's monthly Basic Gas Supply Service (BGSS) prices are located on our website at [www.pseg.com](http://www.pseg.com).

\* The Imbalance of 3.796- will be applied to your Gas Deliveries in the month of October. The amount and month applied may differ if you are switching third party suppliers or your account requires an adjustment.

\*See text

**PSE&G Electric**

Account number for this location 73 378 381 07

Usage	Meter <b>626051212</b>
Actual reading Aug 15	46146
Actual reading Jul 18	46068
Total kWh	78
Distribution Demands	
Annual Demand kW	1.00
Summer Demand kW	1.00
Supply Capacity	
Generation kW	0.77
Transmission kW	0.67

Charges	PoD ID: PE000010164339377005	Rate - GLP
<b>Delivery</b>		
Service charge		\$4.09
Distribution charges		
Annual Demand	1.00 kW @ \$4.360000000	4.36
Summer Demand	1.00 kW @ \$8.090000000	8.09
kWh charges	78 kWh @ \$0.011538462	0.90
Societal Benefits	78 kWh @ \$0.007820513	0.61
<b>Sub-Total Delivery</b>		<b>\$18.05</b>

**Total electric charges** **\$18.05**

\*You are currently purchasing your electric supply from another supplier. If you had been purchasing your electric supply from PSE&G, you would have been billed \$14.76 for this supply. This is your Price to Compare, which varies each month depending upon your usage pattern.

**Other Charges And Credits**

Account number for this location 73 378 381 07

Elec Billing From Aug 15, 2017 Cancelled	Oct 11, 2017	\$-18.05
Gas Billing From Aug 15, 2017 Cancelled	Oct 11, 2017	-13.30
<b>Total other charges and credits</b>		<b>\$31.35 CR</b>

**DIRECT ENERGY BUSINESS, LLC**

Account number for this location 73 378 381 07

*Through the CHOICE Program, you have chosen to purchase electricity from DIRECT ENERGY BUSINESS, LLC. If you have any questions, please contact them directly at 888-925-9115.*

Adjustments	0.00
Current charges	6.54
<b>Total DIRECT ENERGY BUSINESS, LLC Charges</b>	<b>\$6.54</b>

Fixed Price - 78 Kwh Total @ \$0.08379/Kwh

54 ORANGE RD  
 MONTCLAIR TWP NJ

Account number for this location 73 378 382 04

Your next meter reading is  
 scheduled for January 17

Meter reading scheduling  
 1 800 436-PSEG(7734)

**Account Summary for this location**

PSE&G balance from last bill	\$2,895.66 CR
Current Charges	1,616.31
<b>Credit balance</b>	<b>\$1,279.35 CR</b>

**PSE&G Electric**

Account number for this location 73 378 382 04

Usage	Meter <b>278003480</b>
Actual reading Aug 15	6199
Actual reading Jul 18	5556
Difference	643
Meter multiplier	30
Total kWh	19290
<b>Distribution Demands</b>	
Annual Demand kW	72.30
Summer Demand kW	72.30
<b>Measured Demands</b>	
Demand kW	72.30
Constant	30
<b>Supply Capacity</b>	
Generation kW	72.47

<b>Charges</b>	PoD ID: PE000009434846378760	Rate - GLP
<b>Delivery</b>		
Service charge		\$4.09
<b>Distribution charges</b>		
Annual Demand	72.30 kW @ \$4.361825726	315.36
Summer Demand	72.30 kW @ \$8.095020747	585.27
kWh charges	19290 kWh @ \$0.011552100	222.84
Societal Benefits	19290 kWh @ \$0.007868844	151.79
<b>Sub-Total Delivery</b>		<b>\$1,279.35</b>
<b>Total electric charges</b>		<b>\$1,279.35</b>

*\*You are currently purchasing your electric supply from another supplier. If you had been purchasing your electric supply from PSE&G, you would have been billed \$2,095.81 for this supply. This is your Price to Compare, which varies each month depending upon your usage pattern.*

**PSE&G Electric (continued)**

Account number for this location 73 378 382 04

Transmission kW 63.37

**Other Charges And Credits**

Account number for this location 73 378 382 04

Elec Billing From Aug 15, 2017 Oct 11, 2017 \$-1,279.35  
 Cancelled

**Total other charges and credits \$1,279.35 CR**

**DIRECT ENERGY BUSINESS, LLC**

Account number for this location 73 378 382 04

*Through the CHOICE Program, you have chosen to purchase electricity from DIRECT ENERGY BUSINESS, LLC. If you have any questions, please contact them directly at 888-925-9115.*

Adjustments 0.00

Current charges 1,616.31

**Total DIRECT ENERGY BUSINESS, LLC Charges \$1,616.31**

Fixed Price - 19,290 Kwh Total @ \$0.08379/Kwh

32 CEDAR AVE  
 MONTCLAIR TWP NJ

Account number for this location 73 378 383 01

Your next meter reading is  
 scheduled for January 17

Meter reading scheduling  
 1 800 436-PSEG(7734)

**Account Summary for this location**

PSE&G balance from last bill \$192.51 CR

Current Charges -83.15

**Credit balance \$275.66 CR**

**PSE&G Gas**

Account number for this location 73 378 383 01

Usage Meter **3929120**

Estimated reading Aug 15 342

Estimated reading Jul 18 283

Difference 59

Conversion to CCF x 1.0339

CCF total 61.000

Conversion to therms x 1.03200

Total therms 62.952

Gas Deliveries

Bill period deliveries 4.710

Imbalance\* 58.242 +

**Charges** PoD ID: PG000009676840338751 Rate - LVG

**Delivery**

Service charge \$103.43

Distribution charge 62.952 therms @ \$0.0471788 2.97

Societal Benefits 62.952 therms @ \$0.04702000 2.96

**Total Delivery \$109.36**

**Total gas charges \$109.36**

*A history of PSE&G's monthly Basic Gas Supply Service (BGSS) prices are located on our website at www.pseg.com.*

*\* The Imbalance of 58.242+ will be applied to your Gas Deliveries in the month of October. The amount and month applied may differ if you are switching third party suppliers or your account requires an adjustment.*

\*See text

**Other Charges And Credits**

Account number for this location 73 378 383 01

Gas Billing From Aug 15, 2017 Cancelled	Sep 12, 2017	\$-192.51
<b>Total other charges and credits</b>		<b>\$192.51 CR</b>

**176 N FULLERTON AVE RENA MID  
 MONTCLAIR TWP NJ**

Account number for this location 73 378 384 09

Your next meter reading is  
 scheduled for January 17

Meter reading scheduling  
 1 800 436-PSEG(7734)

**Account Summary for this location**

PSE&G balance from last bill	\$970.23
Current Charges	752.35
<b>Total Amount Due</b>	<b>\$1,722.58</b>

**PSE&G Gas**

Account number for this location 73 378 384 09

Usage	Meter <b>2415310</b>
Estimated reading Aug 15	76930
Estimated reading Jul 18	76858
Difference	72
Conversion to CCF	x 1.0339
CCF total	74.441
Conversion to therms	x 1.03200
Total therms	76.823

<b>Charges</b>	PoD ID: PG000011627847445191	Rate - LVG
<b>Delivery</b>		
Service charge		\$103.43
Distribution charge	76.823 therms @ \$0.0472515	3.63
Societal Benefits	76.823 therms @ \$0.04699110	3.61
<b>Total Delivery</b>		<b>\$110.67</b>
<b>Total gas charges</b>		<b>\$110.67</b>

A history of PSE&G's monthly Basic Gas Supply Service (BGSS) prices are located on our website at [www.pseg.com](http://www.pseg.com).

Gas Deliveries	
Bill period deliveries	81.033
Imbalance*	4.210 -

\* The Imbalance of 4.210- will be applied to your Gas Deliveries in the month of October. The amount and month applied may differ if you are switching third party suppliers or your account requires an adjustment.

\*See text

**PSE&G Electric**

Account number for this location 73 378 384 09

Usage	Meter <b>278002714</b>
Estimated reading Aug 15	2412
Actual reading Jul 18	2201
Difference	211
Meter multiplier	45
Total kWh	9495
Distribution Demands	
Annual Demand kW	50.40
Summer Demand kW	50.40
Measured Demands	

<b>Charges</b>	PoD ID: PE000011627848245191	Rate - GLP
<b>Delivery</b>		
Service charge		\$4.09
Distribution charges		
Annual Demand	50.40 kW @ \$4.361706349	219.83
Summer Demand	50.40 kW @ \$8.095039683	407.99
kWh charges	9495 kWh @ \$0.011552396	109.69
Societal Benefits	9495 kWh @ \$0.007869405	74.72
<b>Sub-Total Delivery</b>		<b>\$816.32</b>
<b>Total electric charges</b>		<b>\$816.32</b>

**PSE&G Electric (continued)**

Account number for this location 73 378 384 09

Demand kW	50.40	*You are currently purchasing your electric supply from another supplier. If you had been purchasing your electric supply from PSE&G, you would have been billed \$1,544.05 for this supply. This is your Price to Compare, which varies each month depending upon your usage pattern.
Constant	45	
Supply Capacity		
Generation kW	74.46	
Transmission kW	65.11	

**Other Charges And Credits**

Account number for this location 73 378 384 09

Elec Billing From Aug 15, 2017 Cancelled	Sep 18, 2017	\$-816.32
Gas Billing From Aug 15, 2017 Cancelled	Sep 18, 2017	-153.91
<b>Total other charges and credits</b>		<b>\$970.23 CR</b>

**DIRECT ENERGY BUSINESS, LLC**

Account number for this location 73 378 384 09

*Through the CHOICE Program, you have chosen to purchase electricity from DIRECT ENERGY BUSINESS, LLC. If you have any questions, please contact them directly at 888-925-9115.*

Adjustments	0.00
Current charges	795.59
<b>Total DIRECT ENERGY BUSINESS, LLC Charges</b>	<b>\$795.59</b>

Fixed Price - 9,495 Kwh Total @ \$0.08379/Kwh

**VARIOUS LOCATIONS LTG  
 MONTCLAIR TWP NJ**

Account number for this location 73 378 385 06

Your next meter reading is  
 scheduled for January 03  
 Meter reading scheduling  
 1 800 436-PSEG(7734)

**Account Summary for this location**

PSE&G balance from last bill	\$1,178.90
Current Charges	318.61
<b>Total Amount Due</b>	<b>\$1,497.51</b>

**Unmetered Electric Service**

Account number for this location 73 378 385 06

PoD ID:	Charges	Rate - BPL
PE000011818852345191	<b>Delivery</b>	
PE000011939060745191	Usage/Fixture charge	\$953.65
Service from 8/3/2017 to 8/31/2017	Distribution charges	
	kWh charges 7525 kWh @ \$0.029933555	225.25
Usage 7525.0	<b>Sub-Total Delivery</b>	<b>\$1,178.90</b>
	<b>Unmetered charges</b>	<b>\$1,178.90</b>

*\*The total supply amount (\$318.86) is your Price to Compare for this month should you consider another electric supplier for these services. Your Price to Compare varies each month depending upon your usage pattern.*

**Other Charges And Credits**

Account number for this location 73 378 385 06

Elec Billing From Aug 31, 2017	Oct 11, 2017	\$-1,178.90
Cancelled		
<b>Total other charges and credits</b>		<b>\$1,178.90 CR</b>

**TriEagle Energy, LP**

Account number for this location 73 378 385 06

*Through the CHOICE Program, you have chosen to purchase electricity from TriEagle Energy, LP. If you have any questions, please contact them directly at 877-933-2453.*

Adjustments	0.00
Current charges	318.61
<b>Total TriEagle Energy, LP Charges</b>	<b>\$318.61</b>

176 N FULLERTON AVE  
 MONTCLAIR TWP NJ

Account number for this location 73 378 386 03

Your next meter reading is scheduled for January 03

Meter reading scheduling  
 1 800 436-PSEG(7734)

**Account Summary for this location**

PSE&G balance from last bill	\$24.16
Current Charges	5.55
<b>Total Amount Due</b>	<b>\$29.71</b>



**Unmetered Electric Service**

Account number for this location 73 378 386 03

PoD ID: PE000011818747580574	<b>Charges</b>	Rate - BPL
Service from 8/3/2017 to 8/31/2017	<b>Delivery</b>	
	Usage/Fixture charge	\$20.24
	Distribution charges	
Usage 131.0	kWh charges 131 kWh @ \$0.029934000	3.92
	<b>Sub-Total Delivery</b>	<b>\$24.16</b>
	<b>Unmetered charges</b>	<b>\$24.16</b>

*\*The total supply amount (\$5.55) is your Price to Compare for this month should you consider another electric supplier for these services. Your Price to Compare varies each month depending upon your usage pattern.*

**Other Charges And Credits**

Account number for this location 73 378 386 03

Elec Billing From Aug 31, 2017 Cancelled	Oct 11, 2017	\$-24.16
<b>Total other charges and credits</b>		<b>\$24.16 CR</b>

**TriEagle Energy, LP**

Account number for this location 73 378 386 03

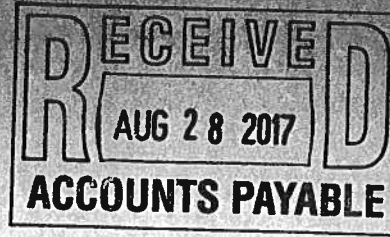
*Through the CHOICE Program, you have chosen to purchase electricity from TriEagle Energy, LP. If you have any questions, please contact them directly at 877-933-2453.*

Adjustments	0.00
Current charges	5.55
<b>Total TriEagle Energy, LP Charges</b>	<b>\$5.55</b>





**Monthly Statement**  
**AUGUST 2017**  
 Account number 42 010 548 02



04

**For service at**  
 25 MAPLE AVE GLENFIELD  
 MONTCLAIR TWP NJ  
 07042

MONTCLAIR BD OF ED  
 MONTCLAIR TWP OF  
 22 VALLEY RD  
 MONTCLAIR NJ 07042-2709

**1 855-BIZ-PSEG (249-7734)**  
**Emergencies 24 hours/7days**  
 Business customer service  
 7 AM - 5.30 PM Mon - Fri  
 Closed on weekend and Holidays

*New Acct# 42 455 184 05 E = 6,468.35*

Visit our website  
 www.pseg.com

Inquiries by mail  
 PSE&G  
 PO Box 14444  
 New Brunswick NJ 08906-4444

**Important Dates**  
 Your payment for current charges  
 is due September 05, 2017.

Your meter(s) are scheduled to be  
 read on or about September 13.

To make a payment from a credit  
 card Log In to **My Account** at  
 pseg.com or call 1 888-575-6273

**Account Summary** *Pd 8/28/17*

PSE&G balance from last bill	<i>\$8,399.99</i>	<i>Ch 21409</i>	\$23,228.99
Payment received Jul 21 - Thank You!			-9,287.16
Current PSE&G - Gas charges for 1 meter			112.91 <i>G</i>
Current PSE&G - Electric charges for 1 meter			2,398.73
Meter Product Charges			2.00
DIRECT ENERGY BUSINESS, LLC Electric Charges			4,067.62
<b>Total Amount Due</b>			<b>\$20,523.09</b>

**\*\* SHUT-OFF NOTICE \*\* 1-800-357-2262 (Mon-Fri, 7:30 AM - 8:00 PM)**  
**Your bill is now past due. Payment of \$13,879.83 must be received by 9/5/2017 or service may be shut off. A security deposit may be required if late payments continue. A statement of customer rights and fees is shown on the reverse side.**

**Si en el futuro usted desea recibir la notificación de desconexión de servicio en español, por favor llame al 1-800-357-2262.**

**Need help understanding your energy bill?** Read the enclosed "Working For You" bill newsletter for a full summary of electric and gas rate schedules, and an explanation of itemized charges on your bill.

# Statement of Customer Rights

PSE&G IS SUBJECT TO THE JURISDICTION OF THE N.J. BOARD OF PUBLIC UTILITIES (BPU), 44 SOUTH CLINTON AVENUE, TRENTON, NJ 08625, 1-609-341-9188 OR TOLL FREE 1-800-624-0241. **HOWEVER, YOU SHOULD CONTACT PSE&G ON ANY BILLING OR SERVICE QUESTIONS BEFORE CALLING THE BPU. THE PSE&G PHONE NUMBER IS SHOWN ON THE FRONT OF THE BILL.**

IF YOU ARE UNABLE TO MAKE A PAYMENT, YOU MAY DISCUSS REASONABLE PAYMENT ARRANGEMENTS BY VISITING ONE OF OUR CUSTOMER SERVICE CENTERS OR BY CALLING OUR CREDIT AND COLLECTION CENTER AT 1-800-357-2262 BETWEEN THE HOURS OF 7:30 AM AND 8:00 PM (MON - FRI). IF YOU WISH TO CONTEST YOUR BILL, YOU MAY VISIT ONE OF OUR CUSTOMER SERVICE CENTERS OR CALL OUR CUSTOMER INQUIRY CENTER AT 1-800-436-7734, MON - FRI, 7:00 AM - 8:00 PM AND SAT, 7:00 AM - 5:00 PM.

YOU MAY HAVE COUNSEL OR THIRD PARTY REPRESENTATION WHEN APPEARING BEFORE PSE&G TO CONTEST A BONA FIDE DISPUTED CHARGE.

IF WITHIN FIVE DAYS A REQUEST IS MADE TO THE BPU FOR AN INVESTIGATION OF THE DISPUTED CHARGE, SERVICE WILL NOT BE DISCONTINUED BECAUSE OF NONPAYMENT OF BILLS PROVIDED ALL UNDISPUTED CHARGES ARE PAID.

YOU MAY CONTACT THE BPU TO REQUEST ASSISTANCE IN THE RESOLUTION OF A BONA FIDE DISPUTED CHARGE. YOU MAY ALSO REQUEST A FORMAL HEARING WITH THE BPU CONCERNING SUCH A DISPUTED CHARGE.

**\*\* Additional Shut Off Information \*\* 1-800-357-2262 (Mon-Fri, 7:30 AM - 8:00 PM)**

**A reconnection fee of \$45.00 will be charged for each service that is shut off. Service may not be restored on the same day payment is made. A fee of \$30.00 will be charged if a visit is made to collect past due bills. A late payment fee may be charged for past due bills. You can avoid a security deposit and poor credit rating by paying bills by their due date.**



**PSE&G Gas**

Usage	Meter <b>3832932</b>
Actual reading Aug 15	121192
Actual reading Jul 17	121132
Conversion to CCF	x 1.0120
CCF total	60.720
Conversion to therms	x 1.03200
Total therms	62.663

Gas Deliveries	
Bill period deliveries	89.408
Imbalance*	26.745 -

\*See text

Charges	PoD ID: PG000010408143545191	Rate - LVG
<b>Delivery</b>		
Service charge		\$107.00
Distribution charge	62.663 therms @ \$0.0472368	2.96
Societal Benefits	62.663 therms @ \$0.04707720	2.95
<b>Total Delivery</b>		<b>\$112.91</b>
<b>Total gas charges</b>		<b>\$112.91</b>

A history of PSE&G's monthly Basic Gas Supply Service (BGSS) prices are located on our website at [www.pseg.com](http://www.pseg.com).

\*The Imbalance of 26.745- will be applied to your Gas Deliveries in the month of October. The amount and month applied may differ if you are switching third party suppliers or your account requires an adjustment.

**PSE&G Electric**

Usage	Meter <b>9206404</b>
Reading Aug 14	
On-Peak actual	5234
Off-Peak1	
Off-Peak2	
Reading Jul 15	
On-Peak actual	5112
Off-Peak1	
Off-Peak2	
Multiplier	400
Total On kWh	22,031
Total Off kWh	26,514
Total kWh	48,545

Distribution Demands	
Annual Demand kW	125.60
Summer Demand kW	125.60

Measured Demands	
On-Peak kW	125.60
Off-Peak2 kW	113.40
Constant	400

Supply Capacity	
Generation kW	85.32
Transmission kW	69.15

Charges	PoD ID: PE000010408144345191	Rate - LPLS
<b>Delivery</b>		
Service charge		\$371.68
Distribution charges		
Annual Demand	125.60 kW @ \$3.767038217	473.14
Summer Demand	125.60 kW @ \$8.961783439	1,125.60
kWh - On-peak	22031 kWh @ \$0.000954110	21.02
kWh - Off-peak	26514 kWh @ \$0.000953836	25.29
Societal Benefits	48545 kWh @ \$0.007868988	382.00
<b>Sub-Total Delivery</b>		<b>\$2,398.73</b>
<b>Total electric charges</b>		<b>\$2,398.73</b>

\*You are currently purchasing your electric supply from another supplier. If you had been purchasing your electric supply from PSE&G, you would have been billed \$3,858.12 for this supply. This is your Price to Compare, which varies each month depending upon your usage pattern.



---

**Meter Products and Services**

Meter	Description	Amount
E 9206404	Elec web (internet access)	\$2.00
<b>Total</b>		<b>\$2.00</b>

---

**DIRECT ENERGY BUSINESS, LLC**

*Through the CHOICE Program, you have chosen to purchase electricity from DIRECT ENERGY BUSINESS, LLC. If you have any questions, please contact them directly at 888-925-9115.*

Adjustments	0.00
Current charges	4,067.62
<b>Total DIRECT ENERGY BUSINESS, LLC Charges</b>	<b>\$4,067.62</b>

Fixed Price - 48,545.46 Kwh Total @ \$0.08379/Kwh

### Electronic Check Conversion

When you pay by check, you authorize PSE&G to use your check to make a one-time electronic fund transfer from your account. If you do not wish to participate, call 1-800-436-PSEG.

### Electric & Gas Rate Information

For news about PSE&G's rate filing and upcoming public hearings visit [www.pseg.com/pseandgfilings](http://www.pseg.com/pseandgfilings)

### Customer Service Centers

Open Monday through Friday, during the hours noted.

Bayonne, 608 Broadway	8am to 4:00pm
Burlington, 501 High Street	8am to 4:00pm
Camden, 1 Port Center	8am to 4:00pm
Elizabeth, 550 N. Broad Street	8am to 4:00pm
Hackensack, 214 Hudson Street	8am to 4:00pm
Hoboken, 615 Washington Street	8am to 4:00pm
Jersey City, 35 Journal Square (Corner of Bergen Ave. & Newkirk St.)	8am to 4:00pm
Newark, 80 Park Plaza	8am to 4:00pm
New Brunswick, 317 George St.	8am to 4:00pm
West Orange, 59 Main St.	8am to 4:00pm
Passaic, 651 Main Ave	8am to 4:00pm
Paterson, 301 Main St (30 Clark St)	8am to 4:00pm
Perth Amboy, 313 Madison Ave.	8am to 4:00pm
Plainfield, 120 West Seventh Street	8am to 4:00pm
Trenton, 28 West State Street	8am to 4:00pm
Union City, 4808 Bergenline Avenue	8am to 4:00pm

### Bill Form Definitions

**Service Charge:** A fixed monthly charge related to metering, billing and account maintenance.

**Distribution Charges (Gas):** Charges related to delivering gas through pipes from supply sources to the customer. These charges include a therm component, and in November through March on certain rate schedules, also include a demand component.

### Bill Form Definitions (continued)

**Balancing Charge (Gas):** This charge reflects storage related costs associated with winter gas use. This charge is only applicable in the billing months of November through March.

**Demand (Gas):** The highest average daily use of gas over the most recent billing months of November to March.

**Supply (Gas):** Charges for customers who do not choose a competitive gas supplier are called Basic Gas Supply Service (BGSS). The charges include the cost of the natural gas as well as the cost of interstate delivery of the gas to New Jersey.

**Distribution Charges (Electric):** Charges related to delivering electricity through wires from supply sources to the customer. These charges include both kilowatt-hour (kWh) and demand (kW) components.

**Measured Demand (Electric):** The maximum use of electricity at any time during a month or monthly time period (on or off-peak).

**Annual Demand (Electric):**

(For Rate HTS): The highest Measured Demand over the most recent 12 months.

(For Rates MD, ED, LPLS, LPLP): The highest Measured Demand in any time period in the current month.

**Summer Demand (Electric):** The Measured Demand (excluding off-peak) in each billing month of June through September.

**Societal Benefits:** This charge recovers the cost of government mandated programs designed to achieve public policy goals, such as energy conservation.

**Securitization Transition:** This charge recovers costs and associated taxes for transition bonds and for BGS transition bonds collected by PSE&G as servicer on behalf of PSE&G Transition Funding LLC and PSE&G Transition Funding II LLC, respectively.

**Supply Capacity (Electric):** A customer's share of the generation and transmission facilities, measured in kilowatts (kW), which must be procured to serve the system annual peak usage. The customer's share is calculated from the customer's peak usage in the prior year's summer. For new customers without prior summer usage the share is calculated from connected load.

**Supply (Electric):** Charges for customers who do not choose a competitive electric supplier are called Basic Generation Service (BGS). The charges include the energy as well as the generation and transmission facilities necessary to produce and transmit the energy.

**TDD** number for the hearing impaired 1 800 225-0072









**For service at**

CHURCH ST & NW COR  
MONTCLAIR TWP NJ  
07042

**1 855-BIZ-PSEG (249-7734)**  
**Emergencies 24 hours/7days**  
Business customer service  
7 AM - 5.30 PM Mon - Fri  
Closed on weekend and Holidays

Visit our website  
[www.pseg.com](http://www.pseg.com)

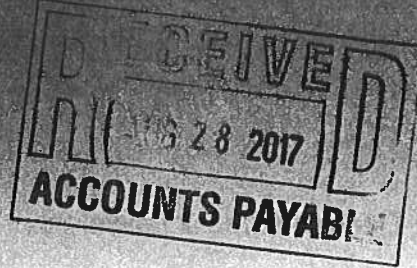
Inquiries by mail  
PSE&G  
PO Box 14444  
New Brunswick NJ 08906-4444

**Important Dates**

Your payment  
is due August 23, 2017.

To make a payment from a credit  
card Log In to **My Account** at  
[pseg.com](http://pseg.com) or call 1 888-575-6273

**Final Bill**  
**AUGUST 2017**  
Account number 66 817 793 01



MONTCLAIR BD OF ED  
MONTCLAIR TWP OF  
22 VALLEY RD  
MONTCLAIR NJ 07042-2709

Nw Acct# 73 378 379 09

**Account Summary**

PSE&G balance from last bill	\$24.05
Payment received Jul 21 - Thank You!	-11.03
Current PSE&G - Unmetered Charges	10.51
DIRECT ENERGY BUSINESS, LLC Electric Charges	2.51
<b>Total Amount Due On Aug 23, 2017</b>	<b>\$26.04</b>

E

**Need help understanding your energy bill?** Read the enclosed "Working For You" bill newsletter for a full summary of electric and gas rate schedules, and an explanation of itemized charges on your bill.

**Summer can bring severe storms with possible power outages. If there is loss of power:** keep refrigerator and freezer doors closed, use caution with candles, and turn off lights and appliances to avoid overloading circuits once power is restored.

**At PSE&G, we are committed to supporting your business needs.** That's why we created a dedicated, toll-free phone number to address your energy questions and concerns. **PSE&G's Business Solutions Center** is available Monday-Friday, 7:00 a.m. 5:30 p.m. at **1-855-249-7734 (1-855-BIZ-PSEG).**

**PSE&G can help your business save energy and money.** Receive our free monthly electronic newsletter that includes money and energy saving tips, energy tools, answers to energy questions and more. **To learn more, visit [pseg.com/energe](http://pseg.com/energe)**

VOUCHER M00M26

### Electronic Check Conversion

When you pay by check, you authorize PSE&G to use your check to make a one-time electronic fund transfer from your account. If you do not wish to participate, call 1-800-436-PSE&G.

### Electric & Gas Rate Information

For news about PSE&G's rate filing and upcoming public hearings visit [www.pseg.com/pseandgfilings](http://www.pseg.com/pseandgfilings)

### Customer Service Centers

Open Monday through Friday, during the hours noted.

Bayonne, 608 Broadway	8am to 4:00pm
Burlington, 501 High Street	8am to 4:00pm
Camden, 1 Port Center	8am to 4:00pm
Elizabeth, 550 N. Broad Street	8am to 4:00pm
Hackensack, 214 Hudson Street	8am to 4:00pm
Hoboken, 615 Washington Street	8am to 4:00pm
Jersey City, 35 Journal Square (Corner of Bergen Ave. & Newkirk St.)	8am to 4:00pm
Newark, 80 Park Plaza	8am to 4:00pm
New Brunswick, 317 George St.	8am to 4:00pm
West Orange, 59 Main St.	8am to 4:00pm
Passaic, 651 Main Ave	8am to 4:00pm
Paterson, 301 Main St (30 Clark St)	8am to 4:00pm
Perth Amboy, 313 Madison Ave.	8am to 4:00pm
Plainfield, 120 West Seventh Street	8am to 4:00pm
Trenton, 28 West State Street	8am to 4:00pm
Union City, 4808 Bergenline Avenue	8am to 4:00pm

### Bill Form Definitions

**Service Charge:** A fixed monthly charge related to metering, billing and account maintenance.

**Distribution Charges (Gas):** Charges related to delivering gas through pipes from supply sources to the customer. These charges include a therm component, and in November through March on certain rate schedules, also

### Bill Form Definitions (continued)

**Balancing Charge (Gas):** This charge reflects storage related costs associated with winter gas use. This charge is only applicable in the billing months of November through March.

**Demand (Gas):** The highest average daily use of gas over the most recent billing months of November to March.

**Supply (Gas):** Charges for customers who do not choose a competitive gas supplier are called Basic Gas Supply Service (BGSS). The charges include the cost of the natural gas as well as the cost of interstate delivery of the gas to New Jersey.

**Distribution Charges (Electric):** Charges related to delivering electricity through wires from supply sources to the customer. These charges include both kilowatthour (kWh) and demand (kW) components.

**Measured Demand (Electric):** The maximum use of electricity at any time during a month or monthly time period (on or off-peak).

#### Annual Demand (Electric):

(For Rate HTS): The highest Measured Demand over the most recent 12 months.

(For Rates MD, ED, LPLS, LPLP): The highest Measured Demand in any time period in the current month.

**Summer Demand (Electric):** The Measured Demand (excluding off-peak) in each billing month of June through September.

**Societal Benefits:** This charge recovers the cost of government mandated programs designed to achieve public policy goals, such as energy conservation.

**Securitization Transition:** This charge recovers costs and associated taxes for transition bonds and for BGS transition bonds collected by PSE&G as servicer on behalf of PSE&G Transition Funding LLC and PSE&G Transition Funding II LLC, respectively.

**Supply Capacity (Electric):** A customer's share of the generation and transmission facilities, measured in kilowatts (kW), which must be procured to serve the system annual peak usage. The customer's share is calculated from the customer's peak usage in the prior year's summer. For new customers without prior summer usage the share is calculated from connected load.

**Supply (Electric):** Charges for customers who do not choose a competitive electric supplier are called Basic Generation Service (BGS). The charges include the energy as well as the generation and transmission facilities necessary to produce and transmit the energy.

TDD number for the hearing impaired 1 800 225-0072



**Unmetered Electric Service**

PoD ID: PE000011818803678780

Service from 7/4/2017  
 to 8/2/2017

Usage	30.0
<b>Distribution Demands</b>	
Annual Demand kW	0.30
Summer Demand kW	0.30
<b>Supply Capacity</b>	
Generation kW	0.29
Transmission kW	0.25

<b>Charges</b>		Rate - GLP
<b>Delivery</b>		
Fixed services		\$1.96
<b>Distribution charges</b>		
Annual Demand	0.30 kW @ \$4.500000000	1.35
Summer Demand	0.30 kW @ \$8.366666700	2.51
kWh charges	30 kWh @ \$0.011552000	0.35
Societal Benefits	30 kWh @ \$0.008000000	0.24
Facilities charge		4.10
<b>Sub-Total Delivery</b>		<b>\$10.51</b>
<b>Unmetered charges</b>		<b>\$10.51</b>

*\*You are currently purchasing your electric supply from another supplier. If you had been purchasing your electric supply from PSE&G, you would have been billed \$5.81. This is your Price to Compare, which varies each month depending upon your usage pattern.*

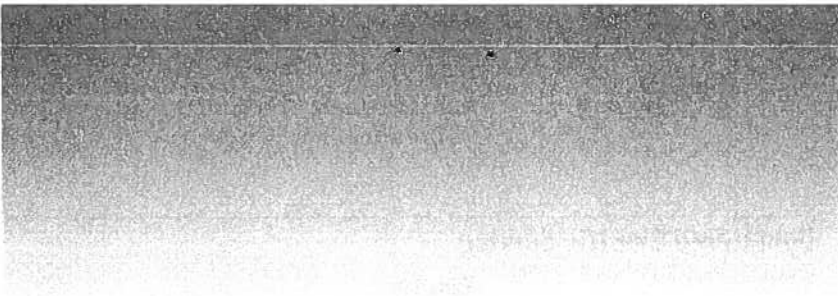
**DIRECT ENERGY BUSINESS, LLC**

*Through the CHOICE Program, you have chosen to purchase electricity from DIRECT ENERGY BUSINESS, LLC. If you have any questions, please contact them directly at 888-925-9115.*

Adjustments	0.00
Current charges	2.51
<b>Total DIRECT ENERGY BUSINESS, LLC Charges</b>	<b>\$2.51</b>

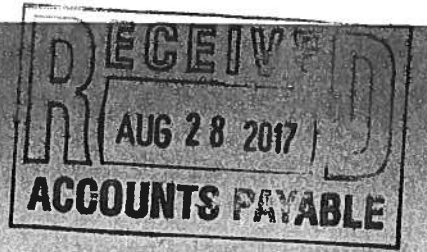
Fixed Price - 30 Kwh Total @ \$0.08379/Kwh







**Final Bill**  
**AUGUST 2017**  
 Account number 67 507 322 08



**For service at**

VARIOUS LOCATIONS LTG  
 MONTCLAIR TWP NJ  
 07042

MONTCLAIR BD OF ED  
 MONTCLAIR TWP OF  
 22 VALLEY RD  
 MONTCLAIR NJ 07042-2709

**1 855-BIZ-PSEG (249-7734)**  
**Emergencies 24 hours/7days**  
 Business customer service  
 7 AM - 5.30 PM Mon - Fri  
 Closed on weekend and Holidays

*New Acct # 73-378 385 06  
 E = 1497.06*

Visit our website  
[www.pseg.com](http://www.pseg.com)

Inquiries by mail  
 PSE&G  
 PO Box 14444  
 New Brunswick NJ 08906-4444

**Important Dates**

Your payment  
 is due August 23, 2017.

To make a payment from a credit  
 card Log In to **My Account** at  
[pseg.com](http://pseg.com) or call 1 888-575-6273

**Account Summary**

PSE&G balance from last bill	\$3,117.19
Payment received Jul 21 - Thank You!	-1,622.51
Current PSE&G - Unmetered Charges	1,198.02
TriEagle Energy, LP Electric Charges	299.04
<b>Total Amount Due On Aug 23, 2017</b>	<b>\$2,991.74</b>

**Need help understanding your energy bill?** Read the enclosed "Working For You" bill newsletter for a full summary of electric and gas rate schedules, and an explanation of itemized charges on your bill.

**Summer can bring severe storms with possible power outages. If there is loss of power:** keep refrigerator and freezer doors closed, use caution with candles, and turn off lights and appliances to avoid overloading circuits once power is restored.

**At PSE&G, we are committed to supporting your business needs.** That's why we created a dedicated, toll-free phone number to address your energy questions and concerns. **PSE&G's Business Solutions Center** is available Monday-Friday, 7:00 a.m. 5:30 p.m. at **1-855-249-7734 (1-855-BIZ-PSEG).**

**PSE&G can help your business save energy and money.** Receive our free monthly electronic newsletter that includes money and energy saving tips, energy tools, answers to energy questions and more. **To learn more, visit [pseg.com/energy](http://pseg.com/energy)**

VOUCHER M00M26

### Electronic Check Conversion

When you pay by check, you authorize PSE&G to use your check to make a one-time electronic fund transfer from your account. If you do not wish to participate, call 1-800-436-PSEG.

### Electric & Gas Rate Information

For news about PSE&G's rate filing and upcoming public hearings visit [www.pseg.com/pseandgfilings](http://www.pseg.com/pseandgfilings)

### Customer Service Centers

Open Monday through Friday, during the hours noted.

Bayonne, 608 Broadway	8am to 4:00pm
Burlington, 501 High Street	8am to 4:00pm
Camden, 1 Port Center	8am to 4:00pm
Elizabeth, 550 N. Broad Street	8am to 4:00pm
Hackensack, 214 Hudson Street	8am to 4:00pm
Hoboken, 615 Washington Street	8am to 4:00pm
Jersey City, 35 Journal Square (Corner of Bergen Ave. & Newkirk St.)	8am to 4:00pm
Newark, 80 Park Plaza	8am to 4:00pm
New Brunswick, 317 George St.	8am to 4:00pm
West Orange, 59 Main St.	8am to 4:00pm
Passaic, 651 Main Ave	8am to 4:00pm
Paterson, 301 Main St (30 Clark St)	8am to 4:00pm
Perth Amboy, 313 Madison Ave.	8am to 4:00pm
Plainfield, 120 West Seventh Street	8am to 4:00pm
Trenton, 28 West State Street	8am to 4:00pm
Union City, 4808 Bergenline Avenue	8am to 4:00pm

### Bill Form Definitions

**Service Charge:** A fixed monthly charge related to metering, billing and account maintenance.

**Distribution Charges (Gas):** Charges related to delivering gas through pipes from supply sources to the customer. These charges include a therm component, and in November through March on certain rate schedules, also

### Bill Form Definitions (continued)

**Balancing Charge (Gas):** This charge reflects storage related costs associated with winter gas use. This charge is only applicable in the billing months of November through March.

**Demand (Gas):** The highest average daily use of gas over the most recent billing months of November to March.

**Supply (Gas):** Charges for customers who do not choose a competitive gas supplier are called Basic Gas Supply Service (BGSS). The charges include the cost of the natural gas as well as the cost of interstate delivery of the gas to New Jersey.

**Distribution Charges (Electric):** Charges related to delivering electricity through wires from supply sources to the customer. These charges include both kilowatthour (kWh) and demand (kW) components.

**Measured Demand (Electric):** The maximum use of electricity at any time during a month or monthly time period (on or off-peak).

#### Annual Demand (Electric):

(For Rate HTS): The highest Measured Demand over the most recent 12 months.

(For Rates MD, ED, LPLS, LPLP): The highest Measured Demand in any time period in the current month.

**Summer Demand (Electric):** The Measured Demand (excluding off-peak) in each billing month of June through September.

**Societal Benefits:** This charge recovers the cost of government mandated programs designed to achieve public policy goals, such as energy conservation.

**Securitization Transition:** This charge recovers costs and associated taxes for transition bonds and for BGS transition bonds collected by PSE&G as servicer on behalf of PSE&G Transition Funding I LLC and PSE&G Transition Funding II LLC, respectively.

**Supply Capacity (Electric):** A customer's share of the generation and transmission facilities, measured in kilowatts (kW), which must be procured to serve the system annual peak usage. The customer's share is calculated from the customer's peak usage in the prior year's summer. For new customers without prior summer usage the share is calculated from connected load.

**Supply (Electric):** Charges for customers who do not choose a competitive electric supplier are called Basic Generation Service (BGS). The charges include the energy as well as the generation and transmission facilities necessary to produce and transmit the energy.

**TDD** number for the hearing impaired 1 800 225-0072



August 2017  
 Account number: 67 567 322 08  
 Visit our website: [www.pseg.com](http://www.pseg.com)

**Unmetered Electric Service**

PoD ID: PE000011818852345191  
 PE000011939060745191

Service from 7/4/2017  
 to 8/2/2017

Usage 7063.0

<b>Charges</b>		Rate - BPL
<b>Delivery</b>		
Usage/Fixture charge		\$986.58
Distribution charges		
kWh charges	1402 kWh @ \$0.029950071	41.99
	Next 5661 kWh @ \$0.029932874	169.45
<b>Sub-Total Delivery</b>		<b>\$1,198.02</b>
<b>Unmetered charges</b>		<b>\$1,198.02</b>

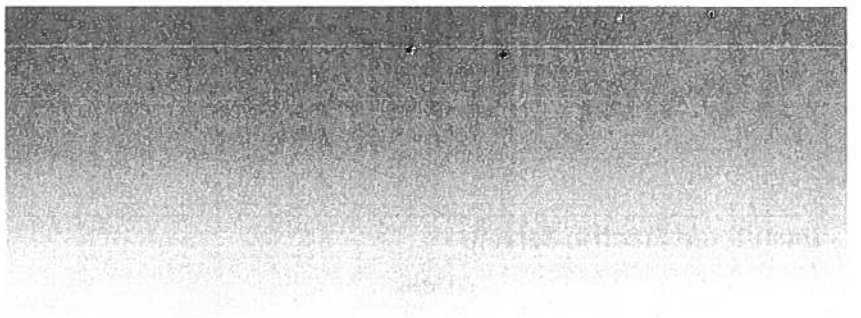
*\*You are currently purchasing your electric supply from another supplier. If you had been purchasing your electric supply from PSE&G, you would have been billed \$347.27. This is your Price to Compare, which varies each month depending upon your usage pattern.*

**TriEagle Energy, LP**

*Through the CHOICE Program, you have chosen to purchase electricity from TriEagle Energy, LP. If you have any questions, please contact them directly at 877-933-2453.*

Adjustments	0.00
Current charges	299.04
<b>Total TriEagle Energy, LP Charges</b>	<b>\$299.04</b>

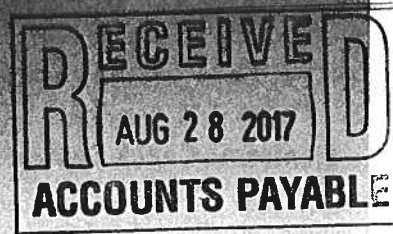








**Final Bill**  
**AUGUST 2017**  
 Account number 67 645 690 01



**For service at**  
 176 N FULLERTON AVE  
 MONTCLAIR TWP NJ  
 07042-3833

MONTCLAIR BD OF ED  
 MONTCLAIR TWP OF  
 22 VALLEY RD  
 MONTCLAIR NJ 07042-2709

**1 855-BIZ-PSEG (249-7734)**  
**Emergencies 24 hours/7days**  
 Business customer service  
 7 AM - 5:30 PM Mon - Fri  
 Closed on weekend and Holidays

*New Acct # 73 378 386 03  
 E = 29.83*

Visit our website  
[www.pseg.com](http://www.pseg.com)

Inquiries by mail  
 PSE&G  
 PO Box 14444  
 New Brunswick NJ 08906-4444

**Important Dates**

Your payment  
 is due August 23, 2017.

To make a payment from a credit  
 card Log In to **My Account** at  
[pseg.com](http://pseg.com) or call 1 888-575-6273

**Account Summary**

PSE&G balance from last bill	\$61.74
Payment received Jul 21 - Thank You!	-31.98
Current PSE&G - Unmetered Charges	24.62
TriEagle Energy, LP Electric Charges	5.21
<b>Total Amount Due On Aug 23, 2017</b>	<b>\$59.59</b>

**Need help understanding your energy bill?** Read the enclosed "Working For You" bill  
 newsletter for a full summary of electric and gas rate schedules, and an explanation of itemized  
 charges on your bill.

**Summer can bring severe storms with possible power outages. If there is loss of  
 power:** keep refrigerator and freezer doors closed, use caution with candles, and turn off lights  
 and appliances to avoid overloading circuits once power is restored.

**At PSE&G, we are committed to supporting your business needs.** That's why we  
 created a dedicated, toll-free phone number to address your energy questions and concerns.  
**PSE&G's Business Solutions Center** is available Monday-Friday, 7:00 a.m. 5:30 p.m. at  
**1-855-249-7734 (1-855-BIZ-PSEG).**

**PSE&G can help your business save energy and money.** Receive our free monthly  
 electronic newsletter that includes money and energy saving tips, energy tools, answers to  
 energy questions and more. **To learn more, visit [pseg.com/energe](http://pseg.com/energe)**

VOUCHER M00M26

### Electronic Check Conversion

When you pay by check, you authorize PSE&G to use your check to make a one-time electronic fund transfer from your account. If you do not wish to participate, call 1-800-436-PSEG.

### Electric & Gas Rate Information

For news about PSE&G's rate filing and upcoming public hearings visit [www.pseg.com/pseandgfilings](http://www.pseg.com/pseandgfilings)

### Customer Service Centers

Open Monday through Friday, during the hours noted

Bayonne, 608 Broadway	8am to 4:00pm
Burlington, 501 High Street	8am to 4:00pm
Camden, 1 Port Center	8am to 4:00pm
Elizabeth, 550 N. Broad Street	8am to 4:00pm
Hackensack, 214 Hudson Street	8am to 4:00pm
Hoboken, 615 Washington Street	8am to 4:00pm
Jersey City, 35 Journal Square (Corner of Bergen Ave. & Newkirk St.)	8am to 4:00pm
Newark, 80 Park Plaza	8am to 4:00pm
New Brunswick, 317 George St.	8am to 4:00pm
West Orange, 59 Main St.	8am to 4:00pm
Passaic, 651 Main Ave	8am to 4:00pm
Paterson, 301 Main St (30 Clark St)	8am to 4:00pm
Perth Amboy, 313 Madison Ave.	8am to 4:00pm
Plainfield, 120 West Seventh Street	8am to 4:00pm
Trenton, 28 West State Street	8am to 4:00pm
Union City, 4808 Bergenline Avenue	8am to 4:00pm

### Bill Form Definitions

**Service Charge:** A fixed monthly charge related to metering, billing and account maintenance.

**Distribution Charges (Gas):** Charges related to delivering gas through pipes from supply sources to the customer. These charges include a therm component, and in November through March on certain rate schedules, also

### Bill Form Definitions (continued)

**Balancing Charge (Gas):** This charge reflects storage related costs associated with winter gas use. This charge is only applicable in the billing months of November through March.

**Demand (Gas):** The highest average daily use of gas over the most recent billing months of November to March.

**Supply (Gas):** Charges for customers who do not choose a competitive gas supplier are called Basic Gas Supply Service (BGSS). The charges include the cost of the natural gas as well as the cost of interstate delivery of the gas to New Jersey.

**Distribution Charges (Electric):** Charges related to delivering electricity through wires from supply sources to the customer. These charges include both kilowatthour (kWh) and demand (kW) components.

**Measured Demand (Electric):** The maximum use of electricity at any time during a month or monthly time period (on or off peak).

#### Annual Demand (Electric):

(For Rate HTS). The highest Measured Demand over the most recent 12 months.

(For Rates MD, ED, LPLS, LPLP): The highest Measured Demand in any time period in the current month.

**Summer Demand (Electric):** The Measured Demand (excluding off-peak) in each billing month of June through September.

**Societal Benefits:** This charge recovers the cost of government mandated programs designed to achieve public policy goals, such as energy conservation.

**Securitization Transition:** This charge recovers costs and associated taxes for transition bonds and for BGS transition bonds collected by PSE&G as servicer on behalf of PSE&G Transition Funding LLC and PSE&G Transition Funding II LLC, respectively.

**Supply Capacity (Electric):** A customer's share of the generation and transmission facilities, measured in kilowatts (kW), which must be procured to serve the system annual peak usage. The customer's share is calculated from the customer's peak usage in the prior year's summer. For new customers without prior summer usage the share is calculated from connected load.

**Supply (Electric):** Charges for customers who do not choose a competitive electric supplier are called Basic Generation Service (BGS). The charges include the energy as well as the generation and transmission facilities necessary to produce and transmit the energy.

**TDD** number for the hearing impaired 1 800 225-0072



August 2017  
 Account number: 67 615 690 01  
 Visit our website: www.pseg.com

**Unmetered Electric Service**

PoD ID: PE000011818747580574

Service from 7/4/2017  
 to 8/2/2017

Usage 123.0

<b>Charges</b>		Rate - BPL
<b>Delivery</b>		
Usage/Fixture charge		\$20.94
Distribution charges		
kWh charges	24 kWh @ \$0.029946000	0.72
	Next 99 kWh @ \$0.029934000	2.96
<b>Sub-Total Delivery</b>		<b>\$24.62</b>
<b>Unmetered charges</b>		<b>\$24.62</b>

*\*You are currently purchasing your electric supply from another supplier. If you had been purchasing your electric supply from PSE&G, you would have been billed \$6.05. This is your Price to Compare, which varies each month depending upon your usage pattern.*

**TriEagle Energy, LP**

*Through the CHOICE Program, you have chosen to purchase electricity from TriEagle Energy, LP. If you have any questions, please contact them directly at 877-933-2453.*

Adjustments	0.00
Current charges	5.21
<b>Total TriEagle Energy, LP Charges</b>	<b>\$5.21</b>







**Monthly Statement**  
**AUGUST 2017**  
 Account number 42 079 504 00

**RECEIVED**  
**AUG 23 2017**  
**ACCOUNTS PAYABLE**

000062 000000221



MONTCLAIR TWP OF  
 BOARD OF EDUCATION  
 22 VALLEY RD STE A  
 MONTCLAIR NJ 07042-2775

*E = 4,623.12*

**For service at**

51 WASHINGTON ST  
 MONTCLAIR TWP NJ  
 07042

**1 855-BIZ-PSEG (249-7734)**

**Emergencies 24 hours/7days**

Business customer service

7 AM - 5.30 PM Mon - Fri

Closed on weekend and Holidays

Visit our website

www.pseg.com

Inquiries by mail

PSE&G

PO Box 14444

New Brunswick NJ 08906-4444

**Important Dates**

Your payment for current charges is due September 05, 2017.

Your meter(s) are scheduled to be read on or about September 13.

To make a payment from a credit card Log In to **My Account** at pseg.com or call 1 888-575-6273

**Account Summary**

*8/28/17  
 \$5,457.04  
 ct 21409*

PSE&G balance from last bill	\$12,112.74
Payment received Jul 21 - Thank You!	-6,655.70
Current PSE&G - Electric charges for 1 meter	2,981.85
Meter Product Charges	2.00
DIRECT ENERGY BUSINESS, LLC Electric Charges	1,639.27
<b>Total Amount Due</b>	<b>\$10,080.16</b>

**\*\* SHUT-OFF NOTICE \*\* 1-800-357-2262 (Mon-Fri, 7:30 AM - 8:00 PM)**  
**Your bill is now past due. Payment of \$5,453.04 must be received by 9/5/2017 or service may be shut off. A security deposit may be required if late payments continue. A statement of customer rights and fees is shown on the reverse side.**

**Si en el futuro usted desea recibir la notificación de desconexión de servicio en español, por favor llame al 1-800-357-2262.**

**Need help understanding your energy bill?** Read the enclosed "Working For You" bill newsletter for a full summary of electric and gas rate schedules, and an explanation of itemized charges on your bill.

**Summer can bring severe storms with possible power outages. If there is loss of power:** keep refrigerator and freezer doors closed, use caution with candles, and turn off lights and appliances to avoid overloading circuits once power is restored.

# Statement of Customer Rights

PSE&G IS SUBJECT TO THE JURISDICTION OF THE N.J. BOARD OF PUBLIC UTILITIES (BPU), 44 SOUTH CLINTON AVENUE, TRENTON, NJ 08625, 1-609-341-9188 OR TOLL FREE 1-800-624-0241. **HOWEVER, YOU SHOULD CONTACT PSE&G ON ANY BILLING OR SERVICE QUESTIONS BEFORE CALLING THE BPU. THE PSE&G PHONE NUMBER IS SHOWN ON THE FRONT OF THE BILL.**

IF YOU ARE UNABLE TO MAKE A PAYMENT, YOU MAY DISCUSS REASONABLE PAYMENT ARRANGEMENTS BY VISITING ONE OF OUR CUSTOMER SERVICE CENTERS OR BY CALLING OUR CREDIT AND COLLECTION CENTER AT 1-800-357-2262 BETWEEN THE HOURS OF 7:30 AM AND 8:00 PM (MON - FRI). IF YOU WISH TO CONTEST YOUR BILL, YOU MAY VISIT ONE OF OUR CUSTOMER SERVICE CENTERS OR CALL OUR CUSTOMER INQUIRY CENTER AT 1-800-436-7734, MON - FRI, 7:00 AM - 8:00 PM AND SAT, 7:00 AM - 5:00 PM.

YOU MAY HAVE COUNSEL OR THIRD PARTY REPRESENTATION WHEN APPEARING BEFORE PSE&G TO CONTEST A BONA FIDE DISPUTED CHARGE.

IF WITHIN FIVE DAYS A REQUEST IS MADE TO THE BPU FOR AN INVESTIGATION OF THE DISPUTED CHARGE, SERVICE WILL NOT BE DISCONTINUED BECAUSE OF NONPAYMENT OF BILLS PROVIDED ALL UNDISPUTED CHARGES ARE PAID.

YOU MAY CONTACT THE BPU TO REQUEST ASSISTANCE IN THE RESOLUTION OF A BONA FIDE DISPUTED CHARGE. YOU MAY ALSO REQUEST A FORMAL HEARING WITH THE BPU CONCERNING SUCH A DISPUTED CHARGE.

**\*\* Additional Shut Off Information \*\* 1-800-357-2262 (Mon-Fri, 7:30 AM - 8:00 PM)**

**A reconnection fee of \$45.00 will be charged for each service that is shut off. Service may not be restored on the same day payment is made. A fee of \$30.00 will be charged if a visit is made to collect past due bills. A late payment fee may be charged for past due bills. You can avoid a security deposit and poor credit rating by paying bills by their due date.**



**PSE&G Electric**

Usage In	Meter <b>9213653</b>
Reading Aug 14	
Actual On-Peak	16545
Actual Off-Peak1	
Actual Off-Peak2	
Reading Jul 15	
Actual On-Peak	16235
Actual Off-Peak1	
Actual Off-Peak2	
Multiplier	80
On-peak kWh In	10432
Off-peak kWh In	14411
Total kWh In	24843

Usage Out	Meter <b>9213653</b>
Reading Aug 14	
Actual On-Peak	1656
Actual Off-Peak1	
Actual Off-Peak2	
Reading Jul 15	
Actual On-Peak	1590
Actual Off-Peak1	
Actual Off-Peak2	
Multiplier	80
On-peak kWh Out	2230
Off-peak kWh Out	3049
Total kWh Out	5279
Net Usage	19564
On-peak	8202
Off-peak	11362

<b>Distribution Demands</b>	
Annual Demand kW	191.5

<b>Measured Demands</b>	
On-Peak kW	191.5
Off-Peak1 kW	0.0
Off-Peak2 kW	149.5
Constant	80

<b>Supply Capacity</b>	
Generation kW	0.00
Transmission kW	0.00

<b>Charges</b>	PoD ID: PE000011897052480545	Rate - LPLS
<b>Delivery</b>		
Service charge		\$371.68
Distribution charges		
Annual Demand	191.50 kW @ \$3.766997389	721.38
Summer Demand	191.50 kW @ \$8.961775457	1,716.18
kWh - On-peak	8202 kWh @ \$0.000953426	7.82
kWh - Off-peak	11362 kWh @ \$0.000954057	10.84
Societal Benefits	19564 kWh @ \$0.007869045	153.95
<b>Sub-Total Delivery</b>		<b>\$2,981.85</b>

**Total electric charges \$2,981.85**

*\*You are currently purchasing your electric supply from another supplier. If you had been purchasing your electric supply from PSE&G, you would have been billed \$1,106.76 for this supply. This is your Price to Compare, which varies each month depending upon your usage pattern.*

**Bi-Directional Meter Data kWh**

MM/YY	Time of Use	In-Use	Out-Use	Difference	Cumulative Difference	Billed kWh
JUN 17	On	26,479	274	26,205	0	26,205
	Off	16,351	3,950	12,401	0	12,401



**PSE&G Electric (continued)**

Bi-Directional Meter Data kWh (continued)						
MM/YY	Time of Use	In-Use	Out-Use	Difference	Cumulative Difference	Billed kWh
JUL 17	On	16,679	3,763	12,916	0	12,916
	Off	14,210	3,522	10,688	0	10,688
AUG 17	On	10,432	2,230	8,202	0	8,202
	Off	14,411	3,049	11,362	0	11,362
<b>Total</b>	<b>On</b>	<b>53,590</b>	<b>6,267</b>	<b>47,323</b>		<b>47,323</b>
	<b>Off</b>	<b>44,972</b>	<b>10,521</b>	<b>34,451</b>		<b>34,451</b>

\*Anniversary Month

**Meter Products and Services**

Meter	Description	Amount
E 9213653	Elec web (internet access)	\$2.00
<b>Total</b>		<b>\$2.00</b>

**DIRECT ENERGY BUSINESS, LLC**

*Through the CHOICE Program, you have chosen to purchase electricity from DIRECT ENERGY BUSINESS, LLC. If you have any questions, please contact them directly at 888-925-9115.*

Adjustments	0.00
Current charges	1,639.27
<b>Total DIRECT ENERGY BUSINESS, LLC Charges</b>	<b>\$1,639.27</b>

Fixed Price - 19,563.984 Kwh Total @ \$0.08379/Kwh



### Electronic Check Conversion

When you pay by check, you authorize PSE&G to use your check to make a one-time electronic fund transfer from your account. If you do not wish to participate, call 1-800-436-PSEG.

### Electric & Gas Rate Information

For news about PSE&G's rate filing and upcoming public hearings visit [www.pseg.com/pseandgfilings](http://www.pseg.com/pseandgfilings)

### Customer Service Centers

Open Monday through Friday, during the hours noted

Bayonne, 608 Broadway	8am to 4:00pm
Burlington, 501 High Street	8am to 4:00pm
Camden, 1 Port Center	8am to 4:00pm
Elizabeth, 550 N. Broad Street	8am to 4:00pm
Hackensack, 214 Hudson Street	8am to 4:00pm
Hoboken, 615 Washington Street	8am to 4:00pm
Jersey City, 35 Journal Square (Corner of Bergen Ave. & Newkirk St.)	8am to 4:00pm
Newark, 80 Park Plaza	8am to 4:00pm
New Brunswick, 317 George St.	8am to 4:00pm
West Orange, 59 Main St.	8am to 4:00pm
Passaic, 651 Main Ave	8am to 4:00pm
Paterson, 301 Main St (30 Clark St)	8am to 4:00pm
Perth Amboy, 313 Madison Ave.	8am to 4:00pm
Plainfield, 120 West Seventh Street	8am to 4:00pm
Trenton, 28 West State Street	8am to 4:00pm
Union City, 4808 Bergenline Avenue	8am to 4:00pm

### Bill Form Definitions

**Service Charge:** A fixed monthly charge related to metering, billing and account maintenance.

**Distribution Charges (Gas):** Charges related to delivering gas through pipes from supply sources to the customer. These charges include a therm component, and in November through March on certain rate schedules, also include a demand component.

### Bill Form Definitions (continued)

**Balancing Charge (Gas):** This charge reflects storage related costs associated with winter gas use. This charge is only applicable in the billing months of November through March.

**Demand (Gas):** The highest average daily use of gas over the most recent billing months of November to March.

**Supply (Gas):** Charges for customers who do not choose a competitive gas supplier are called Basic Gas Supply Service (BGSS). The charges include the cost of the natural gas as well as the cost of interstate delivery of the gas to New Jersey.

**Distribution Charges (Electric):** Charges related to delivering electricity through wires from supply sources to the customer. These charges include both kilowatthour (kWh) and demand (kW) components.

**Measured Demand (Electric):** The maximum use of electricity at any time during a month or monthly time period (on or off-peak).

**Annual Demand (Electric):**

(For Rate HTS): The highest Measured Demand over the most recent 12 months.

(For Rates MD, ED, LPLS, LPLP): The highest Measured Demand in any time period in the current month.

**Summer Demand (Electric):** The Measured Demand (excluding off-peak) in each billing month of June through September.

**Societal Benefits:** This charge recovers the cost of government mandated programs designed to achieve public policy goals, such as energy conservation.

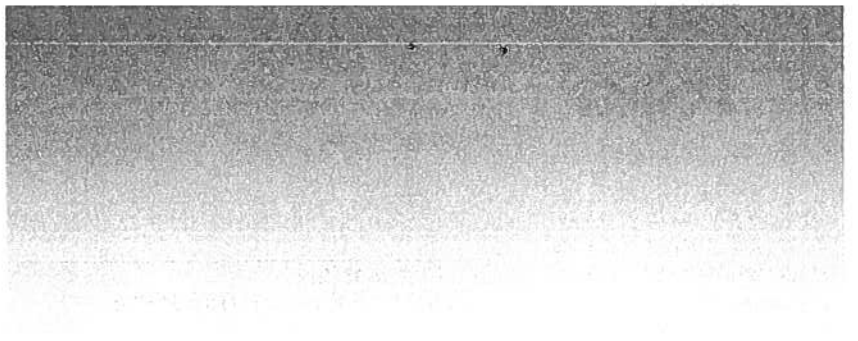
**Securitization Transition:** This charge recovers costs and associated taxes for transition bonds and for BGS transition bonds collected by PSE&G as servicer on behalf of PSE&G Transition Funding LLC and PSE&G Transition Funding II LLC, respectively.

**Supply Capacity (Electric):** A customer's share of the generation and transmission facilities, measured in kilowatts (kW), which must be procured to serve the system annual peak usage. The customer's share is calculated from the customer's peak usage in the prior year's summer. For new customers without prior summer usage the share is calculated from connected load.

**Supply (Electric):** Charges for customers who do not choose a competitive electric supplier are called Basic Generation Service (BGS). The charges include the energy as well as the generation and transmission facilities necessary to produce and transmit the energy.

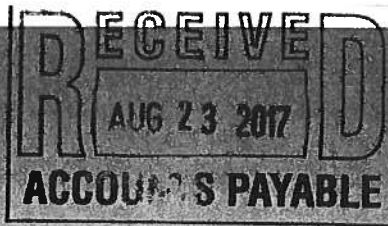
**TDD** number for the hearing impaired 1 800 225-0072







Monthly Statement  
**AUGUST 2017**  
 Account number 42 003 456 09



**For service at**

173 BELLEVUE AVE HEBRON MID  
 MONTCLAIR TWP NJ  
 07043-1818

**1 855-BIZ-PSEG (249-7734)**  
**Emergencies 24 hours/7days**  
 Business customer service  
 7 AM - 5.30 PM Mon - Fri  
 Closed on weekend and Holidays

Visit our website  
[www.pseg.com](http://www.pseg.com)

Inquiries by mail  
 PSE&G  
 PO Box 14444  
 New Brunswick NJ 08906-4444

**Important Dates**

Your payment for current charges is due September 01, 2017.

Your meter(s) are scheduled to be read on or about September 14.

To make a payment from a credit card Log In to **My Account** at [pseg.com](http://pseg.com) or call 1 888-575-6273

000066 000000311  
  
 MONTCLAIR BD OF ED  
 MONTCLAIR TWP OF  
 22 VALLEY RD  
 MONTCLAIR NJ 07042-2709

**Account Summary** Pd 8/28/17 \$107.00 CK 2/14/09

PSE&G balance from last bill	\$12,852.49
Current PSE&G - Gas charges for 1 meter	109.01
<b>Total Amount Due</b>	<b>\$12,961.50</b>

**\*\* SHUT-OFF NOTICE \*\* 1-800-357-2262 (Mon-Fri, 7:30 AM - 8:00 PM)**  
**Your bill is now past due. Payment of \$8,724.45 must be received by 9/1/2017 or service may be shut off. A security deposit may be required if late payments continue. A statement of customer rights and fees is shown on the reverse side.**

**Si en el futuro usted desea recibir la notificación de desconexión de servicio en español, por favor llame al 1-800-357-2262.**

**Need help understanding your energy bill?** Read the enclosed "Working For You" bill newsletter for a full summary of electric and gas rate schedules, and an explanation of itemized charges on your bill.

**Summer can bring severe storms with possible power outages. If there is loss of power:** keep refrigerator and freezer doors closed, use caution with candles, and turn off lights and appliances to avoid overloading circuits once power is restored.

**PSE&G can help your business save energy and money.** Receive our free monthly electronic newsletter that includes money and energy saving tips, energy tools, answers to energy questions and more. **To learn more, visit [pseg.com/energy](http://pseg.com/energy)**

# Statement of Customer Rights

PSE&G IS SUBJECT TO THE JURISDICTION OF THE N.J. BOARD OF PUBLIC UTILITIES (BPU), 44 SOUTH CLINTON AVENUE, TRENTON, NJ 08625, 1-609-341-9188 OR TOLL FREE 1-800-624-0241. **HOWEVER, YOU SHOULD CONTACT PSE&G ON ANY BILLING OR SERVICE QUESTIONS BEFORE CALLING THE BPU. THE PSE&G PHONE NUMBER IS SHOWN ON THE FRONT OF THE BILL.**

IF YOU ARE UNABLE TO MAKE A PAYMENT, YOU MAY DISCUSS REASONABLE PAYMENT ARRANGEMENTS BY VISITING ONE OF OUR CUSTOMER SERVICE CENTERS OR BY CALLING OUR CREDIT AND COLLECTION CENTER AT 1-800-357-2262 BETWEEN THE HOURS OF 7:30 AM AND 8:00 PM (MON - FRI). IF YOU WISH TO CONTEST YOUR BILL, YOU MAY VISIT ONE OF OUR CUSTOMER SERVICE CENTERS OR CALL OUR CUSTOMER INQUIRY CENTER AT 1-800-436-7734, MON - FRI, 7:00 AM - 8:00 PM AND SAT, 7:00 AM - 5:00 PM.

YOU MAY HAVE COUNSEL OR THIRD PARTY REPRESENTATION WHEN APPEARING BEFORE PSE&G TO CONTEST A BONA FIDE DISPUTED CHARGE.

IF WITHIN FIVE DAYS A REQUEST IS MADE TO THE BPU FOR AN INVESTIGATION OF THE DISPUTED CHARGE, SERVICE WILL NOT BE DISCONTINUED BECAUSE OF NONPAYMENT OF BILLS PROVIDED ALL UNDISPUTED CHARGES ARE PAID.

YOU MAY CONTACT THE BPU TO REQUEST ASSISTANCE IN THE RESOLUTION OF A BONA FIDE DISPUTED CHARGE. YOU MAY ALSO REQUEST A FORMAL HEARING WITH THE BPU CONCERNING SUCH A DISPUTED CHARGE.

**\* \* Additional Shut Off Information \* \* 1-800-357-2262 (Mon-Fri, 7:30 AM - 8:00 PM)**

**A reconnection fee of \$45.00 will be charged for each service that is shut off. Service may not be restored on the same day payment is made. A fee of \$30.00 will be charged if a visit is made to collect past due bills. A late payment fee may be charged for past due bills. You can avoid a security deposit and poor credit rating by paying bills by their due date.**



August 2017  
 Account number: 42 003 456 09  
 Visit our website: [www.pseg.com](http://www.pseg.com)

**PSE&G Gas**

Usage	Meter <b>3637662</b>
Actual reading Aug 15	285369
Actual reading Jul 17	285349
Conversion to CCF	x 1.0339
CCF total	20.678
Conversion to therms	x 1.03202
Total therms	21.340

Gas Deliveries	
Bill period deliveries	8.295
Imbalance*	13.045 +

\*See text

Charges	PoD ID: PG000011626833545191	Rate - LVG
<b>Delivery</b>		
Service charge		\$107.00
Distribution charge	21.340 therms @ \$0.0473290	1.01
Societal Benefits	21.340 therms @ \$0.04686040	1.00
<b>Total Delivery</b>		<b>\$109.01</b>
<b>Total gas charges</b>		<b>\$109.01</b>

*A history of PSE&G's monthly Basic Gas Supply Service (BGSS) prices are located on our website at [www.pseg.com](http://www.pseg.com).*

*\* The Imbalance of 13.045+ will be applied to your Gas Deliveries in the month of October. The amount and month applied may differ if you are switching third party suppliers or your account requires an adjustment.*



### Electronic Check Conversion

When you pay by check, you authorize PSE&G to use your check to make a one-time electronic fund transfer from your account. If you do not wish to participate, call 1-800-436-PSEG.

### Electric & Gas Rate Information

For news about PSE&G's rate filing and upcoming public hearings visit [www.pseg.com/pseandgfilings](http://www.pseg.com/pseandgfilings)

### Customer Service Centers

Open Monday through Friday, during the hours noted

Bayonne, 608 Broadway	8am to 4:00pm
Burlington, 501 High Street	8am to 4:00pm
Camden, 1 Port Center	8am to 4:00pm
Elizabeth, 550 N. Broad Street	8am to 4:00pm
Hackensack, 214 Hudson Street	8am to 4:00pm
Hoboken, 615 Washington Street	8am to 4:00pm
Jersey City, 35 Journal Square (Corner of Bergen Ave. & Newkirk St.)	8am to 4:00pm
Newark, 80 Park Plaza	8am to 4:00pm
New Brunswick, 317 George St.	8am to 4:00pm
West Orange, 59 Main St.	8am to 4:00pm
Passaic, 651 Main Ave	8am to 4:00pm
Paterson, 301 Main St (30 Clark St)	8am to 4:00pm
Perth Amboy, 313 Madison Ave.	8am to 4:00pm
Plainfield, 120 West Seventh Street	8am to 4:00pm
Trenton, 28 West State Street	8am to 4:00pm
Union City, 4808 Bergenline Avenue	8am to 4:00pm

### Bill Form Definitions

**Service Charge:** A fixed monthly charge related to metering, billing and account maintenance.

**Distribution Charges (Gas):** Charges related to delivering gas through pipes from supply sources to the customer. These charges include a therm component, and in November through March on certain rate schedules, also include a demand component.

### Bill Form Definitions (continued)

**Balancing Charge (Gas):** This charge reflects storage related costs associated with winter gas use. This charge is only applicable in the billing months of November through March.

**Demand (Gas):** The highest average daily use of gas over the most recent billing months of November to March.

**Supply (Gas):** Charges for customers who do not choose a competitive gas supplier are called Basic Gas Supply Service (BGSS). The charges include the cost of the natural gas as well as the cost of interstate delivery of the gas to New Jersey.

**Distribution Charges (Electric):** Charges related to delivering electricity through wires from supply sources to the customer. These charges include both kilowatt-hour (kWh) and demand (kW) components.

**Measured Demand (Electric):** The maximum use of electricity at any time during a month or monthly time period (on or off-peak)

#### Annual Demand (Electric):

(For Rate HTS): The highest Measured Demand over the most recent 12 months

(For Rates MD, ED, LPLS, LPLP): The highest Measured Demand in any time period in the current month.

**Summer Demand (Electric):** The Measured Demand (excluding off-peak) in each billing month of June through September.

**Societal Benefits:** This charge recovers the cost of government mandated programs designed to achieve public policy goals, such as energy conservation.

**Securitization Transition:** This charge recovers costs and associated taxes for transition bonds and for BGS transition bonds collected by PSE&G as servicer on behalf of PSF&G Transition Funding LLC and PSE&G Transition Funding II LLC, respectively.

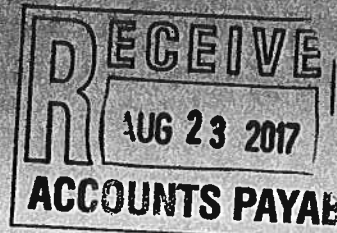
**Supply Capacity (Electric):** A customer's share of the generation and transmission facilities, measured in kilowatts (kW), which must be procured to serve the system annual peak usage. The customer's share is calculated from the customer's peak usage in the prior year's summer. For new customers without prior summer usage the share is calculated from connected load.

**Supply (Electric):** Charges for customers who do not choose a competitive electric supplier are called Basic Generation Service (BGS). The charges include the energy as well as the generation and transmission facilities necessary to produce and transmit the energy.

**TDD number for the hearing impaired** 1 800 225 0072



**Monthly Statement**  
**AUGUST 2017**  
 Account number 42 003 456 09



**For service at**

173 BELLEVUE AVE HEBRON MID  
 MONTCLAIR TWP NJ  
 07043-1818

**1 855-BIZ-PSEG (249-7734)**  
**Emergencies 24 hours/7days**  
 Business customer service  
 7 AM - 5.30 PM Mon - Fri  
 Closed on weekend and Holidays

Visit our website  
 www.pseg.com

Inquiries by mail  
 PSE&G  
 PO Box 14444  
 New Brunswick NJ 08906-4444

**Important Dates**

Your payment for current charges is due August 31, 2017.

Your meter(s) are scheduled to be read on or about September 13.

To make a payment from a credit card Log In to **My Account** at pseg.com or call 1 888-575-6273

000100 000000306



MONTCLAIR BD OF ED  
 MONTCLAIR TWP OF  
 22 VALLEY RD  
 MONTCLAIR NJ 07042-2709

**Account Summary**

PSE&G balance from last bill	<i>Pd 8/28/17 \$6,617.35 CLANDON</i>	\$17,488.73
Payment received Jul 21 - Thank You!		-8,764.28
Current PSE&G - Electric charges for 1 meter		4,128.04 <i>e</i>
<b>Total Amount Due</b>		<b>\$12,852.49</b>

**\*\* SHUT-OFF NOTICE \*\* 1-800-357-2262 (Mon-Fri, 7:30 AM - 8:00 PM)**  
**Your bill is now past due. Payment of \$8,724.45 must be received by 8/31/2017 or service may be shut off. A security deposit may be required if late payments continue. A statement of customer rights and fees is shown on the reverse side.**

**Si en el futuro usted desea recibir la notificación de desconexión de servicio en español, por favor llame al 1-800-357-2262.**

**Need help understanding your energy bill?** Read the enclosed "Working For You" bill newsletter for a full summary of electric and gas rate schedules, and an explanation of itemized charges on your bill.

**Summer can bring severe storms with possible power outages. If there is loss of power:** keep refrigerator and freezer doors closed, use caution with candles, and turn off lights and appliances to avoid overloading circuits once power is restored.

# Statement of Customer Rights

PSE&G IS SUBJECT TO THE JURISDICTION OF THE N.J. BOARD OF PUBLIC UTILITIES (BPU), 44 SOUTH CLINTON AVENUE, TRENTON, NJ 08625, 1-609-341-9188 OR TOLL FREE 1-800-624-0241. **HOWEVER, YOU SHOULD CONTACT PSE&G ON ANY BILLING OR SERVICE QUESTIONS BEFORE CALLING THE BPU. THE PSE&G PHONE NUMBER IS SHOWN ON THE FRONT OF THE BILL.**

IF YOU ARE UNABLE TO MAKE A PAYMENT, YOU MAY DISCUSS REASONABLE PAYMENT ARRANGEMENTS BY VISITING ONE OF OUR CUSTOMER SERVICE CENTERS OR BY CALLING OUR CREDIT AND COLLECTION CENTER AT 1-800-357-2262 BETWEEN THE HOURS OF 7:30 AM AND 8:00 PM (MON - FRI). IF YOU WISH TO CONTEST YOUR BILL, YOU MAY VISIT ONE OF OUR CUSTOMER SERVICE CENTERS OR CALL OUR CUSTOMER INQUIRY CENTER AT 1-800-436-7734, MON - FRI, 7:00 AM - 8:00 PM AND SAT, 7:00 AM - 5:00 PM.

YOU MAY HAVE COUNSEL OR THIRD PARTY REPRESENTATION WHEN APPEARING BEFORE PSE&G TO CONTEST A BONA FIDE DISPUTED CHARGE.

IF WITHIN FIVE DAYS A REQUEST IS MADE TO THE BPU FOR AN INVESTIGATION OF THE DISPUTED CHARGE, SERVICE WILL NOT BE DISCONTINUED BECAUSE OF NONPAYMENT OF BILLS PROVIDED ALL UNDISPUTED CHARGES ARE PAID.

YOU MAY CONTACT THE BPU TO REQUEST ASSISTANCE IN THE RESOLUTION OF A BONA FIDE DISPUTED CHARGE. YOU MAY ALSO REQUEST A FORMAL HEARING WITH THE BPU CONCERNING SUCH A DISPUTED CHARGE.

**\* \* Additional Shut Off Information \* \* 1-800-357-2262 (Mon-Fri, 7:30 AM - 8:00 PM)**

**A reconnection fee of \$45.00 will be charged for each service that is shut off. Service may not be restored on the same day payment is made. A fee of \$30.00 will be charged if a visit is made to collect past due bills. A late payment fee may be charged for past due bills. You can avoid a security deposit and poor credit rating by paying bills by their due date.**





**PSE&G Electric**

Usage	Meter <b>9205674</b>
<b>Reading Aug 14</b>	
On-Peak actual	3890
Off-Peak1	
Off-Peak2	
<b>Reading Jul 15</b>	
On-Peak actual	3813
Off-Peak1	
Off-Peak2	
Multiplier	400
Total On kWh	13,431
Total Off kWh	17,216
<b>Total kWh</b>	<b>30,647</b>
<b>Distribution Demands</b>	
Annual Demand kW	72.00
Summer Demand kW	72.00
<b>Measured Demands</b>	
On-Peak kW	72.00
Off-Peak2 kW	46.80
Constant	400
<b>Supply Capacity</b>	
Generation kW	64.99
Transmission kW	53.43

<b>Charges</b>	PoD ID: PE000011626834345191	Rate - LPLS
<b>Delivery</b>		
Service charge		\$371.68
<b>Distribution charges</b>		
Annual Demand	72.00 kW @ \$3.766944444	271.22
Summer Demand	72.00 kW @ \$8.961805556	645.25
kWh - On-peak	13431 kWh @ \$0.000953764	12.81
kWh - Off-peak	17216 kWh @ \$0.000953764	16.42
Societal Benefits	30647 kWh @ \$0.007868959	241.16
<b>Sub-Total Delivery</b>		<b>\$1,558.54</b>
<b>Supply*</b>		
<b>BGS Capacity</b>		
Generation	64.99 kW @ \$6.188036555	402.21
Transmission	53.43 kW @ \$8.525443078	455.54
<b>BGS Energy</b>		
On-peak	7153 kWh @ \$0.074550538	533.26
Next	6278 kWh @ \$0.067217267	421.99
Off-peak	9824 kWh @ \$0.047089780	462.61
Next	7392 kWh @ \$0.039757846	293.89
<b>Sub-Total Supply</b>		<b>\$2,569.50</b>
<b>Total electric charges</b>		<b>\$4,128.04</b>

*\*The total supply amount (\$2,569.50) is your Price to Compare for this month should you consider another electric supplier for these services. Your Price to Compare varies each month depending upon your usage pattern.*



### Electronic Check Conversion

When you pay by check, you authorize PSE&G to use your check to make a one-time electronic fund transfer from your account. If you do not wish to participate, call 1-800-436-PSEG.

### Electric & Gas Rate Information

For news about PSE&G's rate filing and upcoming public hearings visit [www.pseg.com/riseandfilings](http://www.pseg.com/riseandfilings)

### Customer Service Centers

Open Monday through Friday, during the hours noted

Bayonne, 608 Broadway	8am to 4:00pm
Burlington, 501 High Street	8am to 4:00pm
Camden, 1 Port Center	8am to 4:00pm
Elizabeth, 550 N. Broad Street	8am to 4:00pm
Hackensack, 214 Hudson Street	8am to 4:00pm
Hoboken, 615 Washington Street	8am to 4:00pm
Jersey City, 35 Journal Square (Corner of Bergen Ave. & Newkirk St.)	8am to 4:00pm
Newark, 80 Park Plaza	8am to 4:00pm
New Brunswick, 317 George St.	8am to 4:00pm
West Orange, 59 Main St.	8am to 4:00pm
Passaic, 651 Main Ave	8am to 4:00pm
Paterson, 301 Main St (30 Clark St)	8am to 4:00pm
Perth Amboy, 313 Madison Ave.	8am to 4:00pm
Plainfield, 120 West Seventh Street	8am to 4:00pm
Trenton, 28 West State Street	8am to 4:00pm
Union City, 4808 Bergenline Avenue	8am to 4:00pm

### Bill Form Definitions

**Service Charge:** A fixed monthly charge related to metering, billing and account maintenance.

**Distribution Charges (Gas):** Charges related to delivering gas through pipes from supply sources to the customer. These charges include a therm component, and in November through March on certain rate schedules, also include a demand component.

### Bill Form Definitions (continued)

**Balancing Charge (Gas):** This charge reflects storage related costs associated with winter gas use. This charge is only applicable in the billing months of November through March.

**Demand (Gas):** The highest average daily use of gas over the most recent billing months of November to March.

**Supply (Gas):** Charges for customers who do not choose a competitive gas supplier are called Basic Gas Supply Service (BGSS). The charges include the cost of the natural gas as well as the cost of interstate delivery of the gas to New Jersey.

**Distribution Charges (Electric):** Charges related to delivering electricity through wires from supply sources to the customer. These charges include both kilowatt-hour (kWh) and demand (kW) components.

**Measured Demand (Electric):** The maximum use of electricity at any time during a month or monthly time period (on or off-peak).

#### Annual Demand (Electric):

(For Rate HTS): The highest Measured Demand over the most recent 12 months.

(For Rates MD, ED, LPLS, LPI P): The highest Measured Demand in any time period in the current month.

**Summer Demand (Electric):** The Measured Demand (excluding off-peak) in each billing month of June through September.

**Societal Benefits:** This charge recovers the cost of government mandated programs designed to achieve public policy goals, such as energy conservation.

**Securitization Transition:** This charge recovers costs and associated taxes for transition bonds and for BGS transition bonds collected by PSE&G as servicer on behalf of PSE&G Transition Funding LLC and PSE&G Transition Funding II LLC, respectively.

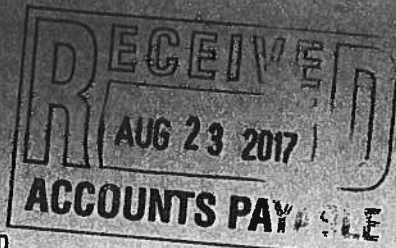
**Supply Capacity (Electric):** A customer's share of the generation and transmission facilities, measured in kilowatts (kW), which must be procured to serve the system annual peak usage. The customer's share is calculated from the customer's peak usage in the prior year's summer. For new customers without prior summer usage the share is calculated from connected load.

**Supply (Electric):** Charges for customers who do not choose a competitive electric supplier are called Basic Generation Service (BGS). The charges include the energy as well as the generation and transmission facilities necessary to produce and transmit the energy.

**TDD** number for the hearing impaired 1-800-225-0072



Monthly Statement  
 AUGUST 2017  
 Account number 42 003 519 00



000065 000000220  
 MONTCLAIR BD OF ED  
 TWSP OF MONTCLAIR  
 22 VALLEY RD  
 MONTCLAIR NJ 07042-2709

*E = 11,917.82*  
*OK 21409*

**For service at**

100 CHESTNUT ST HIGH SCH  
 MONTCLAIR TWP NJ  
 07042-2908

**1 855-BIZ-PSEG (249-7734)**  
**Emergencies 24 hours/7 days**  
 Business customer service  
 7 AM - 5.30 PM Mon - Fri  
 Closed on weekend and Holidays

Visit our website  
 www.pseg.com

Inquiries by mail  
 PSE&G  
 PO Box 14444  
 New Brunswick NJ 08906-4444

**Important Dates**

Your payment for current charges  
 is due September 05, 2017.

Your meter(s) are scheduled to be  
 read on or about September 14.

To make a payment from a credit  
 card Log In to **My Account** at  
 pseg.com or call 1 888-575-6273

**Account Summary**

PSE&G balance from last bill	<i>Pd \$ 29,077.31 8/28/17</i>	\$29,079.31
Payment received Jul 21 - Thank You!		-15,014.26
Current PSE&G - Gas charges for 2 meters		231.77
Current PSE&G - Electric charges for 1 meter		4,348.21
Meter Product Charges		2.00
DIRECT ENERGY BUSINESS, LLC Electric Charges		7,567.61
<b>Total Amount Due</b>		<b>\$26,214.64</b>

**\*\* SHUT-OFF NOTICE \*\* 1-800-357-2262 (Mon-Fri, 7:30 AM - 8:00 PM)**  
**Your bill is now past due. Payment of \$14,061.05 must be received by 9/5/2017 or service may be shut off. A security deposit may be required if late payments continue. A statement of customer rights and fees is shown on the reverse side.**

**Si en el futuro usted desea recibir la notificación de desconexión de servicio en español, por favor llame al 1-800-357-2262.**

**Need help understanding your energy bill?** Read the enclosed "Working For You" bill newsletter for a full summary of electric and gas rate schedules, and an explanation of itemized charges on your bill.

# Statement of Customer Rights

PSE&G IS SUBJECT TO THE JURISDICTION OF THE N.J. BOARD OF PUBLIC UTILITIES (BPU), 44 SOUTH CLINTON AVENUE, TRENTON, NJ 08625, 1-609-341-9188 OR TOLL FREE 1-800-624-0241. **HOWEVER, YOU SHOULD CONTACT PSE&G ON ANY BILLING OR SERVICE QUESTIONS BEFORE CALLING THE BPU. THE PSE&G PHONE NUMBER IS SHOWN ON THE FRONT OF THE BILL.**

IF YOU ARE UNABLE TO MAKE A PAYMENT, YOU MAY DISCUSS REASONABLE PAYMENT ARRANGEMENTS BY VISITING ONE OF OUR CUSTOMER SERVICE CENTERS OR BY CALLING OUR CREDIT AND COLLECTION CENTER AT 1-800-357-2262 BETWEEN THE HOURS OF 7:30 AM AND 8:00 PM (MON - FRI). IF YOU WISH TO CONTEST YOUR BILL, YOU MAY VISIT ONE OF OUR CUSTOMER SERVICE CENTERS OR CALL OUR CUSTOMER INQUIRY CENTER AT 1-800-436-7734, MON - FRI, 7:00 AM - 8:00 PM AND SAT, 7:00 AM - 5:00 PM.

YOU MAY HAVE COUNSEL OR THIRD PARTY REPRESENTATION WHEN APPEARING BEFORE PSE&G TO CONTEST A BONA FIDE DISPUTED CHARGE.

IF WITHIN FIVE DAYS A REQUEST IS MADE TO THE BPU FOR AN INVESTIGATION OF THE DISPUTED CHARGE, SERVICE WILL NOT BE DISCONTINUED BECAUSE OF NONPAYMENT OF BILLS PROVIDED ALL UNDISPUTED CHARGES ARE PAID.

YOU MAY CONTACT THE BPU TO REQUEST ASSISTANCE IN THE RESOLUTION OF A BONA FIDE DISPUTED CHARGE. YOU MAY ALSO REQUEST A FORMAL HEARING WITH THE BPU CONCERNING SUCH A DISPUTED CHARGE.

**\*\* Additional Shut Off Information \*\* 1-800-357-2262 (Mon-Fri, 7:30 AM - 8:00 PM)**

**A reconnection fee of \$45.00 will be charged for each service that is shut off. Service may not be restored on the same day payment is made. A fee of \$30.00 will be charged if a visit is made to collect past due bills. A late payment fee may be charged for past due bills. You can avoid a security deposit and poor credit rating by paying bills by their due date.**



**PSE&G Gas**

Usage	Meter <b>2579052</b>
Estimated reading Aug 15	8436
Actual reading Jul 17	8185
Conversion to CCF	x 1.0682
CCF total	268.118
Conversion to therms	x 1.03200
Total therms	276.698

Gas Deliveries	
Bill period deliveries	134.387
Imbalance*	142.311 +

\*See text

Usage	Meter <b>1784994</b>
Actual reading Aug 15	522254
Actual reading Jul 17	522000
Conversion to CCF	x 1.0070
CCF total	255.778
Conversion to therms	x 1.03200
Total therms	263.963

Gas Deliveries	
Bill period deliveries	112.030
Imbalance*	151.933 +

\*See text

**Charges** PoD ID: PG000008461142538751 Rate - GSG

<b>Delivery</b>		
Service charge		\$12.39
Distribution charge	276.698 therms @ \$0.2691743	74.48
Societal Benefits	276.698 therms @ \$0.04705490	13.02
<b>Total Delivery</b>		<b>\$99.89</b>
<b>Total gas charges</b>		<b>\$99.89</b>

A history of PSE&G's monthly Basic Gas Supply Service (BGSS) prices are located on our website at www.pseg.com.

\* The Imbalance of 142.311+ will be applied to your Gas Deliveries in the month of October. The amount and month applied may differ if you are switching third party suppliers or your account requires an adjustment.

**Charges** PoD ID: PG000008461143338751 Rate - LVG

<b>Delivery</b>		
Service charge		\$107.00
Distribution charge	263.963 therms @ \$0.0472036	12.46
Societal Benefits	263.963 therms @ \$0.04705200	12.42
<b>Total Delivery</b>		<b>\$131.88</b>
<b>Total gas charges</b>		<b>\$131.88</b>

A history of PSE&G's monthly Basic Gas Supply Service (BGSS) prices are located on our website at www.pseg.com.

\* The Imbalance of 151.933+ will be applied to your Gas Deliveries in the month of October. The amount and month applied may differ if you are switching third party suppliers or your account requires an adjustment.

**PSE&G Electric**

Usage	Meter <b>9213601</b>
Reading Aug 14	
On-Peak actual	7325
Off-Peak1	
Off-Peak2	
Reading Jul 15	
On-Peak actual	7099
Off-Peak1	
Off-Peak2	
Multiplier	400
Total On kWh	47,512
Total Off kWh	42,804
Total kWh	90,316

Distribution Demands

**Charges** PoD ID: PE000008461144138751 Rate - LPLS

<b>Delivery</b>		
Service charge		\$371.68
Distribution charges		
Annual Demand	249.80 kW @ \$3.767013611	941.00
Summer Demand	249.80 kW @ \$8.961809448	2,238.66
kWh - On-peak	47512 kWh @ \$0.000954075	45.33
kWh - Off-peak	42804 kWh @ \$0.000954116	40.84
Societal Benefits	90316 kWh @ \$0.007869038	710.70
<b>Sub-Total Delivery</b>		<b>\$4,348.21</b>
<b>Total electric charges</b>		<b>\$4,348.21</b>

\*You are currently purchasing your electric supply from another supplier. If you had been purchasing your electric supply from PSE&G, you would have been billed \$7,643.04 for this



**PSE&G Electric (continued)**

Annual Demand kW 249.80  
Summer Demand kW 249.80  
*supply. This is your Price to Compare, which varies each month depending upon your usage pattern.*

**Measured Demands**

On-Peak kW 249.80  
Off-Peak2 kW 196.90  
Constant 400

**Supply Capacity**

Generation kW 194.65  
Transmission kW 138.31

**Meter Products and Services**

Meter	Description	Amount
E 9213601	Elec web (internet access)	\$2.00
<b>Total</b>		<b>\$2.00</b>

**DIRECT ENERGY BUSINESS, LLC**

*Through the CHOICE Program, you have chosen to purchase electricity from DIRECT ENERGY BUSINESS, LLC. If you have any questions, please contact them directly at 888-925-9115.*

Adjustments	0.00
Current charges	7,567.61
<b>Total DIRECT ENERGY BUSINESS, LLC Charges</b>	<b>\$7,567.61</b>

Fixed Price - 90,316.44 Kwh Total @ \$0.08379/Kwh

### Electronic Check Conversion

When you pay by check, you authorize PSE&G to use your check to make a one-time electronic fund transfer from your account. If you do not wish to participate, call 1-800-436-PSEG.

### Electric & Gas Rate Information

For news about PSE&G's rate filing and upcoming public hearings visit [www.pseg.com/pseandgfilings](http://www.pseg.com/pseandgfilings)

### Customer Service Centers

Open Monday through Friday, during the hours noted.

Bayonne, 608 Broadway	8am to 4:00pm
Burlington, 501 High Street	8am to 4:00pm
Camden, 1 Port Center	8am to 4:00pm
Elizabeth, 550 N. Broad Street	8am to 4:00pm
Hackensack, 214 Hudson Street	8am to 4:00pm
Hoboken, 615 Washington Street	8am to 4:00pm
Jersey City, 35 Journal Square (Corner of Bergen Ave. & Newkirk St.)	8am to 4:00pm
Newark, 80 Park Plaza	8am to 4:00pm
New Brunswick, 317 George St.	8am to 4:00pm
West Orange, 59 Main St.	8am to 4:00pm
Passaic, 651 Main Ave	8am to 4:00pm
Paterson, 301 Main St (30 Clark St)	8am to 4:00pm
Perth Amboy, 313 Madison Ave.	8am to 4:00pm
Plainfield, 120 West Seventh Street	8am to 4:00pm
Trenton, 28 West State Street	8am to 4:00pm
Union City, 4808 Bergenline Avenue	8am to 4:00pm

### Bill Form Definitions

**Service Charge:** A fixed monthly charge related to metering, billing and account maintenance.

**Distribution Charges (Gas):** Charges related to delivering gas through pipes from supply sources to the customer. These charges include a therm component, and in November through March on certain rate schedules, also include a demand component.

### Bill Form Definitions (continued)

**Balancing Charge (Gas):** This charge reflects storage related costs associated with winter gas use. This charge is only applicable in the billing months of November through March.

**Demand (Gas):** The highest average daily use of gas over the most recent billing months of November to March.

**Supply (Gas):** Charges for customers who do not choose a competitive gas supplier are called Basic Gas Supply Service (BGSS). The charges include the cost of the natural gas as well as the cost of interstate delivery of the gas to New Jersey.

**Distribution Charges (Electric):** Charges related to delivering electricity through wires from supply sources to the customer. These charges include both kilowatthour (kWh) and demand (kW) components.

**Measured Demand (Electric):** The maximum use of electricity at any time during a month or monthly time period (on or off-peak).

**Annual Demand (Electric):**

(For Rate HTS): The highest Measured Demand over the most recent 12 months.

(For Rates MD, ED, LPLS, LPLP): The highest Measured Demand in any time period in the current month.

**Summer Demand (Electric):** The Measured Demand (excluding off-peak) in each billing month of June through September.

**Societal Benefits:** This charge recovers the cost of government mandated programs designed to achieve public policy goals, such as energy conservation.

**Securitization Transition:** This charge recovers costs and associated taxes for transition bonds and for BGS transition bonds collected by PSE&G as servicer on behalf of PSE&G Transition Funding LLC and PSE&G Transition Funding II LLC, respectively.

**Supply Capacity (Electric):** A customer's share of the generation and transmission facilities, measured in kilowatts (kW), which must be procured to serve the system annual peak usage. The customer's share is calculated from the customer's peak usage in the prior year's summer. For new customers without prior summer usage the share is calculated from connected load.

**Supply (Electric):** Charges for customers who do not choose a competitive electric supplier are called Basic Generation Service (BGS). The charges include the energy as well as the generation and transmission facilities necessary to produce and transmit the energy.

**TDD** number for the hearing impaired 1 800 225-0072









Monthly Statement  
**AUGUST 2017**  
 Account number 42 007 763 08

**AUG 23 2017**  
**ACCOUNTS PAYABLE**

**For service at**

54 ORANGE RD HILLSIDE  
 MONTCLAIR TWP NJ  
 07042-2110

**1 855-BIZ-PSEG (249-7734)**  
**Emergencies 24 hours/7days**  
 Business customer service  
 7 AM - 5.30 PM Mon - Fri  
 Closed on weekend and Holidays

Visit our website  
[www.pseg.com](http://www.pseg.com)

Inquiries by mail  
 PSE&G  
 PO Box 14444  
 New Brunswick NJ 08906-4444

**Important Dates**

Your payment for current charges is due September 05, 2017.

Your meter(s) are scheduled to be read on or about September 13.

To make a payment from a credit card Log In to **My Account** at [pseg.com](http://pseg.com) or call 1 888-575-6273

000073 000000217  
  
 MONTCLAIR BD OF ED  
 MONTCLAIR TWP OF  
 22 VALLEY RD  
 MONTCLAIR NJ 07042-2709

*8/28/17 \$41.03  
 CK # 21409*

**Account Summary**

PSE&G balance from last bill	\$10,480.62
Payment received Jul 21 - Thank You!	-5,768.62
Current PSE&G - Gas charges for 1 meter	12.39
Meter Product Charges	2.00
Other PSE&G Charges and Credits - see pg. 3	-1,031.82
<b>Total Amount Due</b>	<b>\$3,694.57</b>

*14.39*

**\*\* SHUT-OFF NOTICE \*\* 1-800-357-2262 (Mon-Fri, 7:30 AM - 8:00 PM)**  
**Your bill is now past due. Payment of \$3,666.18 must be received by 9/5/2017 or service may be shut off. A security deposit may be required if late payments continue. A statement of customer rights and fees is shown on the reverse side.**

**Si en el futuro usted desea recibir la notificación de desconexión de servicio en español, por favor llame al 1-800-357-2262.**

**Need help understanding your energy bill?** Read the enclosed "Working For You" bill newsletter for a full summary of electric and gas rate schedules, and an explanation of itemized charges on your bill.

**Summer can bring severe storms with possible power outages. If there is loss of power:** keep refrigerator and freezer doors closed, use caution with candles, and turn off lights and appliances to avoid overloading circuits once power is restored.

# Statement of Customer Rights

PSE&G IS SUBJECT TO THE JURISDICTION OF THE N.J. BOARD OF PUBLIC UTILITIES (BPU), 44 SOUTH CLINTON AVENUE, TRENTON, NJ 08625, 1-609-341-9188 OR TOLL FREE 1-800-624-0241. **HOWEVER, YOU SHOULD CONTACT PSE&G ON ANY BILLING OR SERVICE QUESTIONS BEFORE CALLING THE BPU. THE PSE&G PHONE NUMBER IS SHOWN ON THE FRONT OF THE BILL.**

IF YOU ARE UNABLE TO MAKE A PAYMENT, YOU MAY DISCUSS REASONABLE PAYMENT ARRANGEMENTS BY VISITING ONE OF OUR CUSTOMER SERVICE CENTERS OR BY CALLING OUR CREDIT AND COLLECTION CENTER AT 1-800-357-2262 BETWEEN THE HOURS OF 7:30 AM AND 8:00 PM (MON - FRI). IF YOU WISH TO CONTEST YOUR BILL, YOU MAY VISIT ONE OF OUR CUSTOMER SERVICE CENTERS OR CALL OUR CUSTOMER INQUIRY CENTER AT 1-800-436-7734, MON - FRI, 7:00 AM - 8:00 PM AND SAT, 7:00 AM - 5:00 PM.

YOU MAY HAVE COUNSEL OR THIRD PARTY REPRESENTATION WHEN APPEARING BEFORE PSE&G TO CONTEST A BONA FIDE DISPUTED CHARGE.

IF WITHIN FIVE DAYS A REQUEST IS MADE TO THE BPU FOR AN INVESTIGATION OF THE DISPUTED CHARGE, SERVICE WILL NOT BE DISCONTINUED BECAUSE OF NONPAYMENT OF BILLS PROVIDED ALL UNDISPUTED CHARGES ARE PAID.

YOU MAY CONTACT THE BPU TO REQUEST ASSISTANCE IN THE RESOLUTION OF A BONA FIDE DISPUTED CHARGE. YOU MAY ALSO REQUEST A FORMAL HEARING WITH THE BPU CONCERNING SUCH A DISPUTED CHARGE.

**\*\* Additional Shut Off Information \*\* 1-800-357-2262 (Mon-Fri, 7:30 AM - 8:00 PM)**

**A reconnection fee of \$45.00 will be charged for each service that is shut off. Service may not be restored on the same day payment is made. A fee of \$30.00 will be charged if a visit is made to collect past due bills. A late payment fee may be charged for past due bills. You can avoid a security deposit and poor credit rating by paying bills by their due date.**



August 2017  
 Account number 42 007 763 08  
 Visit our website: www.pseg.com

**PSE&G Gas**

Usage	Meter <b>4225127</b>
Actual reading Aug 15	0
Actual reading Jul 17	0
Conversion to CCF	x 1.0120
Total therms	0.000

Gas Deliveries	
Bill period deliveries	212.489
Imbalance*	212.489 -

\*See text

<b>Charges</b>	PoD ID: PG000010894967845191	Rate - GSG
<b>Delivery</b>		
Service charge		\$12.39
<b>Total Delivery</b>		<b>\$12.39</b>
<b>Total gas charges</b>		<b>\$12.39</b>

A history of PSE&G's monthly Basic Gas Supply Service (BGSS) prices are located on our website at [www.pseg.com](http://www.pseg.com).

\* The Imbalance of 212.489- will be applied to your Gas Deliveries in the month of October. The amount and month applied may differ if you are switching third party suppliers or your account requires an adjustment.

**Meter Products and Services**

Meter	Description	Amount
E 0	Elec web (internet access)	\$2.00
<b>Total</b>		<b>\$2.00</b>

**Other Charges And Credits**

Fast Meter Credit	Aug 9, 2017	\$-1,031.82
<b>Total other charges and credits</b>		<b>\$1,031.82 CR</b>



### Electronic Check Conversion

When you pay by check, you authorize PSE&G to use your check to make a one-time electronic fund transfer from your account. If you do not wish to participate, call 1-800-436-PSEG.

### Electric & Gas Rate Information

For news about PSE&G's rate filing and upcoming public hearings visit [www.pseg.com/pseandgfilings](http://www.pseg.com/pseandgfilings)

### Customer Service Centers

Open Monday through Friday, during the hours noted.

Bayonne, 608 Broadway	8am to 4:00pm
Burlington, 501 High Street	8am to 4:00pm
Camden, 1 Port Center	8am to 4:00pm
Elizabeth, 550 N. Broad Street	8am to 4:00pm
Hackensack, 214 Hudson Street	8am to 4:00pm
Hoboken, 615 Washington Street	8am to 4:00pm
Jersey City, 35 Journal Square (Corner of Bergen Ave. & Newkirk St.)	8am to 4:00pm
Newark, 80 Park Plaza	8am to 4:00pm
New Brunswick, 317 George St.	8am to 4:00pm
West Orange, 59 Main St.	8am to 4:00pm
Passaic, 651 Main Ave	8am to 4:00pm
Paterson, 301 Main St (30 Clark St)	8am to 4:00pm
Perth Amboy, 313 Madison Ave.	8am to 4:00pm
Plainfield, 120 West Seventh Street	8am to 4:00pm
Trenton, 28 West State Street	8am to 4:00pm
Union City, 4808 Bergenline Avenue	8am to 4:00pm

### Bill Form Definitions

**Service Charge:** A fixed monthly charge related to metering, billing and account maintenance.

**Distribution Charges (Gas):** Charges related to delivering gas through pipes from supply sources to the customer. These charges include a therm component, and in November through March on certain rate schedules, also include a demand component.

### Bill Form Definitions (continued)

**Balancing Charge (Gas):** This charge reflects storage related costs associated with winter gas use. This charge is only applicable in the billing months of November through March.

**Demand (Gas):** The highest average daily use of gas over the most recent billing months of November to March.

**Supply (Gas):** Charges for customers who do not choose a competitive gas supplier are called Basic Gas Supply Service (BGSS). The charges include the cost of the natural gas as well as the cost of interstate delivery of the gas to New Jersey.

**Distribution Charges (Electric):** Charges related to delivering electricity through wires from supply sources to the customer. These charges include both kilowatt-hour (kWh) and demand (kW) components.

**Measured Demand (Electric):** The maximum use of electricity at any time during a month or monthly time period (on or off-peak).

#### Annual Demand (Electric):

(For Rate HTS): The highest Measured Demand over the most recent 12 months.

(For Rates MD, ED, LPLS, LPLP): The highest Measured Demand in any time period in the current month.

**Summer Demand (Electric):** The Measured Demand (excluding off-peak) in each billing month of June through September.

**Societal Benefits:** This charge recovers the cost of government mandated programs designed to achieve public policy goals, such as energy conservation.

**Securitization Transition:** This charge recovers costs and associated taxes for transition bonds and for BGS transition bonds collected by PSE&G as servicer on behalf of PSE&G Transition Funding LLC and PSE&G Transition Funding II LLC, respectively.

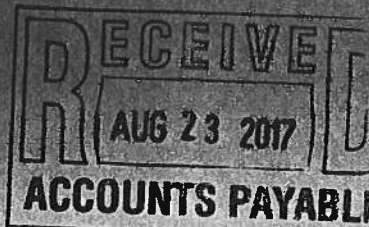
**Supply Capacity (Electric):** A customer's share of the generation and transmission facilities, measured in kilowatts (kW), which must be procured to serve the system annual peak usage. The customer's share is calculated from the customer's peak usage in the prior year's summer. For new customers without prior summer usage the share is calculated from connected load.

**Supply (Electric):** Charges for customers who do not choose a competitive electric supplier are called Basic Generation Service (BGS). The charges include the energy as well as the generation and transmission facilities necessary to produce and transmit the energy.

**TDD** number for the hearing impaired 1 800 225-0072



Monthly Statement  
 AUGUST 2017  
 Account number 42 007 763 08



**For service at**

54 ORANGE RD HILLSIDE  
 MONTCLAIR TWP NJ  
 07042-2110

**1 855-BIZ-PSEG (249-7734)**

**Emergencies 24 hours/7days**

Business customer service

7 AM - 5:30 PM Mon - Fri

Closed on weekend and Holidays

Visit our website

www.pseg.com

Inquiries by mail

PSE&G

PO Box 14444

New Brunswick NJ 08906-4444

**Important Dates**

Your payment for current charges is due September 05, 2017.

Your meter(s) are scheduled to be read on or about September 13.

To make a payment from a credit card Log In to **My Account** at pseg.com or call 1 888-575-6273

000071 000000218



MONTCLAIR BD OF ED  
 MONTCLAIR TWP OF  
 22 VALLEY RD  
 MONTCLAIR NJ 07042-2709

*E = 2,589.91*

**Account Summary**

PSE&G balance from last bill *8/28/17 \$4,618.73 CK 21409* \$3,694.57

Current PSE&G - Electric charges for 1 meter 1,392.59

DIRECT ENERGY BUSINESS, LLC Electric Charges 1,197.32

**Total Amount Due \$6,284.48**

**\*\* SHUT-OFF NOTICE \*\* 1-800-357-2262 (Mon-Fri, 7:30 AM - 8:00 PM)**

**Your bill is now past due. Payment of \$3,666.18 must be received by 9/5/2017 or service may be shut off. A security deposit may be required if late payments continue. A statement of customer rights and fees is shown on the reverse side.**

**Si en el futuro usted desea recibir la notificación de desconexión de servicio en español, por favor llame al 1-800-357-2262.**

**Need help understanding your energy bill?** Read the enclosed "Working For You" bill newsletter for a full summary of electric and gas rate schedules, and an explanation of itemized charges on your bill.

**Summer can bring severe storms with possible power outages. If there is loss of power:** keep refrigerator and freezer doors closed, use caution with candles, and turn off lights and appliances to avoid overloading circuits once power is restored.

# Statement of Customer Rights

PSE&G IS SUBJECT TO THE JURISDICTION OF THE N.J. BOARD OF PUBLIC UTILITIES (BPU), 44 SOUTH CLINTON AVENUE, TRENTON, NJ 08625, 1-609-341-9188 OR TOLL FREE 1-800-624-0241. **HOWEVER, YOU SHOULD CONTACT PSE&G ON ANY BILLING OR SERVICE QUESTIONS BEFORE CALLING THE BPU. THE PSE&G PHONE NUMBER IS SHOWN ON THE FRONT OF THE BILL.**

IF YOU ARE UNABLE TO MAKE A PAYMENT, YOU MAY DISCUSS REASONABLE PAYMENT ARRANGEMENTS BY VISITING ONE OF OUR CUSTOMER SERVICE CENTERS OR BY CALLING OUR CREDIT AND COLLECTION CENTER AT 1-800-357-2262 BETWEEN THE HOURS OF 7:30 AM AND 8:00 PM (MON - FRI). IF YOU WISH TO CONTEST YOUR BILL, YOU MAY VISIT ONE OF OUR CUSTOMER SERVICE CENTERS OR CALL OUR CUSTOMER INQUIRY CENTER AT 1-800-436-7734, MON - FRI, 7:00 AM - 8:00 PM AND SAT, 7:00 AM - 5:00 PM.

YOU MAY HAVE COUNSEL OR THIRD PARTY REPRESENTATION WHEN APPEARING BEFORE PSE&G TO CONTEST A BONA FIDE DISPUTED CHARGE.

IF WITHIN FIVE DAYS A REQUEST IS MADE TO THE BPU FOR AN INVESTIGATION OF THE DISPUTED CHARGE, SERVICE WILL NOT BE DISCONTINUED BECAUSE OF NONPAYMENT OF BILLS PROVIDED ALL UNDISPUTED CHARGES ARE PAID.

YOU MAY CONTACT THE BPU TO REQUEST ASSISTANCE IN THE RESOLUTION OF A BONA FIDE DISPUTED CHARGE. YOU MAY ALSO REQUEST A FORMAL HEARING WITH THE BPU CONCERNING SUCH A DISPUTED CHARGE.

**\*\* Additional Shut Off Information \*\* 1-800-357-2262 (Mon-Fri, 7:30 AM - 8:00 PM)**

**A reconnection fee of \$45.00 will be charged for each service that is shut off. Service may not be restored on the same day payment is made. A fee of \$30.00 will be charged if a visit is made to collect past due bills. A late payment fee may be charged for past due bills. You can avoid a security deposit and poor credit rating by paying bills by their due date.**



**PSE&G Electric**

Usage	Meter <b>9213599</b>
<b>Reading Aug 14</b>	
On-Peak actual	6664
Off-Peak1	
Off-Peak2	
<b>Reading Jul 15</b>	
On-Peak actual	6545
Off-Peak1	
Off-Peak2	
Multiplier	120
Total On kWh	8,242
Total Off kWh	6,048
<b>Total kWh</b>	<b>14,290</b>
<b>Distribution Demands</b>	
Annual Demand kW	70.30
Summer Demand kW	70.30
<b>Measured Demands</b>	
On-Peak kW	70.30
Off-Peak2 kW	52.50
Constant	120
<b>Supply Capacity</b>	
Generation kW	35.20
Transmission kW	28.48

Charges	PoD ID: PE000010894968645191	Rate - LPLS
<b>Delivery</b>		
Service charge		\$371.68
<b>Distribution charges</b>		
Annual Demand	70.30 kW @ \$3.766998578	264.82
Summer Demand	70.30 kW @ \$8.961735420	630.01
kWh - On-peak	8242 kWh @ \$0.000953652	7.86
kWh - Off-peak	6048 kWh @ \$0.000954034	5.77
Societal Benefits	14290 kWh @ \$0.007869139	112.45
<b>Sub-Total Delivery</b>		<b>\$1,392.59</b>

**Total electric charges \$1,392.59**

*\*You are currently purchasing your electric supply from another supplier. If you had been purchasing your electric supply from PSE&G, you would have been billed \$1,311.91 for this supply. This is your Price to Compare, which varies each month depending upon your usage pattern.*

**DIRECT ENERGY BUSINESS, LLC**

*Through the CHOICE Program, you have chosen to purchase electricity from DIRECT ENERGY BUSINESS, LLC. If you have any questions, please contact them directly at 888-925-9115.*

Adjustments	0.00
Current charges	1,197.32
<b>Total DIRECT ENERGY BUSINESS, LLC Charges</b>	<b>\$1,197.32</b>

Fixed Price - 14,289.534 Kwh Total @ \$0.08379/Kwh



### Electronic Check Conversion

When you pay by check, you authorize PSE&G to use your check to make a one-time electronic fund transfer from your account. If you do not wish to participate, call 1-800-436-PSEG.

### Electric & Gas Rate Information

For news about PSE&G's rate filing and upcoming public hearings visit [www.pseg.com/pseandgfilings](http://www.pseg.com/pseandgfilings)

### Customer Service Centers

Open Monday through Friday, during the hours noted.

Bayonne, 608 Broadway	8am to 4:00pm
Burlington, 501 High Street	8am to 4:00pm
Camden, 1 Port Center	8am to 4:00pm
Elizabeth, 550 N. Broad Street	8am to 4:00pm
Hackensack, 214 Hudson Street	8am to 4:00pm
Hoboken, 615 Washington Street	8am to 4:00pm
Jersey City, 35 Journal Square (Corner of Bergen Ave. & Newkirk St.)	8am to 4:00pm
Newark, 80 Park Plaza	8am to 4:00pm
New Brunswick, 317 George St.	8am to 4:00pm
West Orange, 59 Main St.	8am to 4:00pm
Passaic, 651 Main Ave	8am to 4:00pm
Paterson, 301 Main St (30 Clark St)	8am to 4:00pm
Perth Amboy, 313 Madison Ave.	8am to 4:00pm
Plainfield, 120 West Seventh Street	8am to 4:00pm
Trenton, 28 West State Street	8am to 4:00pm
Union City, 4808 Bergenline Avenue	8am to 4:00pm

### Bill Form Definitions

**Service Charge:** A fixed monthly charge related to metering, billing and account maintenance.

**Distribution Charges (Gas):** Charges related to delivering gas through pipes from supply sources to the customer. These charges include a therm component, and in November through March on certain rate schedules, also include a demand component.

### Bill Form Definitions (continued)

**Balancing Charge (Gas):** This charge reflects storage related costs associated with winter gas use. This charge is only applicable in the billing months of November through March.

**Demand (Gas):** The highest average daily use of gas over the most recent billing months of November to March.

**Supply (Gas):** Charges for customers who do not choose a competitive gas supplier are called Basic Gas Supply Service (BGSS). The charges include the cost of the natural gas as well as the cost of interstate delivery of the gas to New Jersey.

**Distribution Charges (Electric):** Charges related to delivering electricity through wires from supply sources to the customer. These charges include both kilowatt-hour (kWh) and demand (kW) components.

**Measured Demand (Electric):** The maximum use of electricity at any time during a month or monthly time period (on or off-peak).

#### Annual Demand (Electric):

(For Rate HTS): The highest Measured Demand over the most recent 12 months.

(For Rates MD, ED, LPLS, LPLP): The highest Measured Demand in any time period in the current month.

**Summer Demand (Electric):** The Measured Demand (excluding off-peak) in each billing month of June through September.

**Societal Benefits:** This charge recovers the cost of government mandated programs designed to achieve public policy goals, such as energy conservation.

**Securitization Transition:** This charge recovers costs and associated taxes for transition bonds and for BGS transition bonds collected by PSE&G as servicer on behalf of PSE&G Transition Funding LLC and PSE&G Transition Funding II LLC, respectively.

**Supply Capacity (Electric):** A customer's share of the generation and transmission facilities, measured in kilowatts (kW), which must be procured to serve the system annual peak usage. The customer's share is calculated from the customer's peak usage in the prior year's summer. For new customers without prior summer usage the share is calculated from connected load.

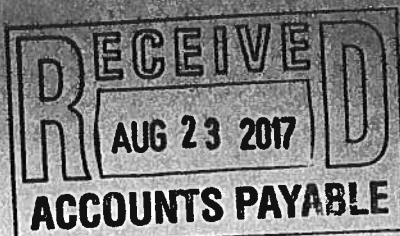
**Supply (Electric):** Charges for customers who do not choose a competitive electric supplier are called Basic Generation Service (BGS). The charges include the energy as well as the generation and transmission facilities necessary to produce and transmit the energy.

**TDD** number for the hearing impaired 1 800 225-0072





Monthly Statement  
**AUGUST 2017**  
 Account number 42 007 764 05

**For service at**

MT HEBRON RD BRADFORD  
 MONTCLAIR TWP NJ  
 07042

**1 855-BIZ-PSEG (249-7734)**

**Emergencies 24 hours/7days**

Business customer service

7 AM - 5.30 PM Mon - Fri

Closed on weekend and Holidays

Visit our website

www.pseg.com

Inquiries by mail

PSE&G

PO Box 14444

New Brunswick NJ 08906-4444

**Important Dates**

Your payment for current charges  
 is due September 05, 2017.

Your meter(s) are scheduled to be  
 read on or about September 13.

To make a payment from a credit  
 card Log In to **My Account** at  
 pseg.com or call 1 888-575-6273

000068 000000219



MONTCLAIR BD OF ED  
 MONTCLAIR TWP OF  
 22 VALLEY RD  
 MONTCLAIR NJ 07042-2709

*E = 4,112.22*

**Account Summary**

PSE&G balance from last bill	<i>Pd 8/28/17 \$5,182.68 Cr + 21409</i>	\$10,836.64
Payment received Jul 21 - Thank You!		-5,706.20
Current PSE&G - Gas charges for 1 meter		117.96
Current PSE&G - Electric charges for 1 meter		2,107.48
Meter Product Charges		2.00
DIRECT ENERGY BUSINESS, LLC Electric Charges		2,002.74
<b>Total Amount Due</b>		<b>\$9,360.62</b>

**\*\* SHUT-OFF NOTICE \*\* 1-800-357-2262 (Mon-Fri, 7:30 AM - 8:00 PM)**

**Your bill is now past due. Payment of \$5,126.44 must be received by 9/5/2017 or service may be shut off. A security deposit may be required if late payments continue. A statement of customer rights and fees is shown on the reverse side.**

**Si en el futuro usted desea recibir la notificación de desconexión de servicio en español, por favor llame al 1-800-357-2262.**

**Need help understanding your energy bill?** Read the enclosed "Working For You" bill newsletter for a full summary of electric and gas rate schedules, and an explanation of itemized charges on your bill.

# Statement of Customer Rights

PSE&G IS SUBJECT TO THE JURISDICTION OF THE N.J. BOARD OF PUBLIC UTILITIES (BPU), 44 SOUTH CLINTON AVENUE, TRENTON, NJ 08625, 1-609-341-9188 OR TOLL FREE 1-800-624-0241. **HOWEVER, YOU SHOULD CONTACT PSE&G ON ANY BILLING OR SERVICE QUESTIONS BEFORE CALLING THE BPU. THE PSE&G PHONE NUMBER IS SHOWN ON THE FRONT OF THE BILL.**

IF YOU ARE UNABLE TO MAKE A PAYMENT, YOU MAY DISCUSS REASONABLE PAYMENT ARRANGEMENTS BY VISITING ONE OF OUR CUSTOMER SERVICE CENTERS OR BY CALLING OUR CREDIT AND COLLECTION CENTER AT 1-800-357-2262 BETWEEN THE HOURS OF 7:30 AM AND 8:00 PM (MON - FRI). IF YOU WISH TO CONTEST YOUR BILL, YOU MAY VISIT ONE OF OUR CUSTOMER SERVICE CENTERS OR CALL OUR CUSTOMER INQUIRY CENTER AT 1-800-436-7734, MON - FRI, 7:00 AM - 8:00 PM AND SAT, 7:00 AM - 5:00 PM.

YOU MAY HAVE COUNSEL OR THIRD PARTY REPRESENTATION WHEN APPEARING BEFORE PSE&G TO CONTEST A BONA FIDE DISPUTED CHARGE.

IF WITHIN FIVE DAYS A REQUEST IS MADE TO THE BPU FOR AN INVESTIGATION OF THE DISPUTED CHARGE, SERVICE WILL NOT BE DISCONTINUED BECAUSE OF NONPAYMENT OF BILLS PROVIDED ALL UNDISPUTED CHARGES ARE PAID.

YOU MAY CONTACT THE BPU TO REQUEST ASSISTANCE IN THE RESOLUTION OF A BONA FIDE DISPUTED CHARGE. YOU MAY ALSO REQUEST A FORMAL HEARING WITH THE BPU CONCERNING SUCH A DISPUTED CHARGE.

**\*\* Additional Shut Off Information \*\* 1-800-357-2262 (Mon-Fri, 7:30 AM - 8:00 PM)**

**A reconnection fee of \$45.00 will be charged for each service that is shut off. Service may not be restored on the same day payment is made. A fee of \$30.00 will be charged if a visit is made to collect past due bills. A late payment fee may be charged for past due bills. You can avoid a security deposit and poor credit rating by paying bills by their due date.**



**PSE&G Gas**

Usage	Meter <b>2283375</b>
Actual reading Aug 15	12472
Actual reading Jul 17	12363
Conversion to CCF	x 1.0339
CCF total	112.695
Conversion to therms	x 1.03200
Total therms	116.301

Gas Deliveries	
Bill period deliveries	101.685
Imbalance*	14.616 +

\*See text

**Charges** PoD ID: PG000010894971045191 Rate - LVG

<b>Delivery</b>		
Service charge		\$107.00
Distribution charge	116.301 therms @ \$0.0472051	5.49
Societal Benefits	116.301 therms @ \$0.04703310	5.47
<b>Total Delivery</b>		<b>\$117.96</b>

**Total gas charges \$117.96**

A history of PSE&G's monthly Basic Gas Supply Service (BGSS) prices are located on our website at www.pseg.com.

\*The imbalance of 14.616+ will be applied to your Gas Deliveries in the month of October. The amount and month applied may differ if you are switching third party suppliers or your account requires an adjustment.

**PSE&G Electric**

Usage	Meter <b>9213517</b>
Reading Aug 14	
On-Peak actual	7084
Off-Peak1	
Off-Peak2	
Reading Jul 15	
On-Peak actual	6884
Off-Peak1	
Off-Peak2	
Multiplier	120
Total On kWh	14,189
Total Off kWh	9,713
Total kWh	23,902

Distribution Demands	
Annual Demand kW	119.80
Summer Demand kW	119.80

Measured Demands	
On-Peak kW	119.80
Off-Peak2 kW	93.40
Constant	120

Supply Capacity	
Generation kW	64.24
Transmission kW	36.31

**Charges** PoD ID: PE000010894972845191 Rate - LPLS

<b>Delivery</b>		
Service charge		\$371.68
Distribution charges		
Annual Demand	119.80 kW @ \$3.767028381	451.29
Summer Demand	119.80 kW @ \$8.961769616	1,073.62
kWh - On-peak	14189 kWh @ \$0.000954260	13.54
kWh - Off-peak	9713 kWh @ \$0.000954391	9.27
Societal Benefits	23902 kWh @ \$0.007868798	188.08
<b>Sub-Total Delivery</b>		<b>\$2,107.48</b>

**Total electric charges \$2,107.48**

\*You are currently purchasing your electric supply from another supplier. If you had been purchasing your electric supply from PSE&G, you would have been billed \$2,154.44 for this supply. This is your Price to Compare, which varies each month depending upon your usage pattern.



---

**Meter Products and Services**

Meter	Description	Amount
E 9213517	Elec web (internet access)	\$2.00
<b>Total</b>		<b>\$2.00</b>

---

**DIRECT ENERGY BUSINESS, LLC**

*Through the CHOICE Program, you have chosen to purchase electricity from DIRECT ENERGY BUSINESS, LLC. If you have any questions, please contact them directly at 888-925-9115.*

Adjustments	0.00
Current charges	2,002.74
<b>Total DIRECT ENERGY BUSINESS, LLC Charges</b>	<b>\$2,002.74</b>

Fixed Price - 23,901.912 Kwh Total @ \$0.08379/Kwh

### Electronic Check Conversion

When you pay by check, you authorize PSE&G to use your check to make a one-time electronic fund transfer from your account. If you do not wish to participate, call 1-800-436-PSEG.

### Electric & Gas Rate Information

For news about PSE&G's rate filing and upcoming public hearings visit [www.pseg.com/pseandgfilings](http://www.pseg.com/pseandgfilings)

### Customer Service Centers

Open Monday through Friday, during the hours noted.

Bayonne, 608 Broadway	8am to 4:00pm
Burlington, 501 High Street	8am to 4:00pm
Camden, 1 Port Center	8am to 4:00pm
Elizabeth, 550 N. Broad Street	8am to 4:00pm
Hackensack, 214 Hudson Street	8am to 4:00pm
Hoboken, 615 Washington Street	8am to 4:00pm
Jersey City, 35 Journal Square (Corner of Bergen Ave. & Newkirk St.)	8am to 4:00pm
Newark, 80 Park Plaza	8am to 4:00pm
New Brunswick, 317 George St.	8am to 4:00pm
West Orange, 59 Main St.	8am to 4:00pm
Passaic, 651 Main Ave	8am to 4:00pm
Paterson, 301 Main St (30 Clark St)	8am to 4:00pm
Perth Amboy, 313 Madison Ave.	8am to 4:00pm
Plainfield, 120 West Seventh Street	8am to 4:00pm
Trenton, 28 West State Street	8am to 4:00pm
Union City, 4808 Bergenline Avenue	8am to 4:00pm

### Bill Form Definitions

**Service Charge:** A fixed monthly charge related to metering, billing and account maintenance.

**Distribution Charges (Gas):** Charges related to delivering gas through pipes from supply sources to the customer. These charges include a therm component, and in November through March on certain rate schedules, also include a demand component.

### Bill Form Definitions (continued)

**Balancing Charge (Gas):** This charge reflects storage related costs associated with winter gas use. This charge is only applicable in the billing months of November through March.

**Demand (Gas):** The highest average daily use of gas over the most recent billing months of November to March.

**Supply (Gas):** Charges for customers who do not choose a competitive gas supplier are called Basic Gas Supply Service (BGSS). The charges include the cost of the natural gas as well as the cost of interstate delivery of the gas to New Jersey.

**Distribution Charges (Electric):** Charges related to delivering electricity through wires from supply sources to the customer. These charges include both kilowatt-hour (kWh) and demand (kW) components.

**Measured Demand (Electric):** The maximum use of electricity at any time during a month or monthly time period (on or off-peak).

**Annual Demand (Electric):**

(For Rate HTS): The highest Measured Demand over the most recent 12 months.

(For Rates MD, ED, LPLS, LPLP): The highest Measured Demand in any time period in the current month.

**Summer Demand (Electric):** The Measured Demand (excluding off-peak) in each billing month of June through September.

**Societal Benefits:** This charge recovers the cost of government mandated programs designed to achieve public policy goals, such as energy conservation.

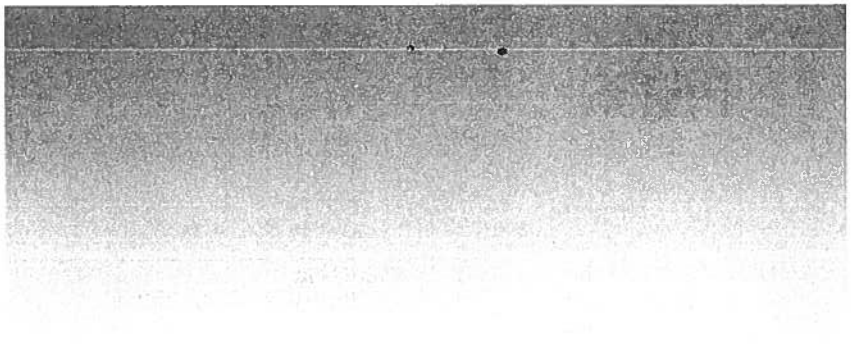
**Securitization Transition:** This charge recovers costs and associated taxes for transition bonds and for BGS transition bonds collected by PSE&G as servicer on behalf of PSE&G Transition Funding LLC and PSE&G Transition Funding II LLC, respectively.

**Supply Capacity (Electric):** A customer's share of the generation and transmission facilities, measured in kilowatts (kW), which must be procured to serve the system annual peak usage. The customer's share is calculated from the customer's peak usage in the prior year's summer. For new customers without prior summer usage the share is calculated from connected load.

**Supply (Electric):** Charges for customers who do not choose a competitive electric supplier are called Basic Generation Service (BGS). The charges include the energy as well as the generation and transmission facilities necessary to produce and transmit the energy.

**TDD** number for the hearing impaired 1 800 225-0072





.